



2015 CAPITAL IMPROVEMENT PROGRAM

REVISION 5

Board of School Trustees
December 1, 2021
Jeff Wagner, Chief of Facilities
Facilities Service Unit

Jeff Wagner
December 1, 2021

Reference 3.01



Capital Improvement Program

Revision 5

Overview

- 2015 CIP update
- Full Needs Compared to Capital Improvement Program Funds
- Recommendations/Decisions
- Capital Improvement Program, Revision 5, Comments and Questions

Prepared by the following:

- Jeff Wagner, Chief of Facilities, Facilities Services Unit
- Justin Lam, Interim Director, Construction Management
- Rick Baldwin, Director, Demographics, Zoning and GIS
- Rodney Foutz, Director, Facilities and Bond Fund Financial Management
- Tracy Murphy, Coordinator Demographics, Zoning and GIS
- Dawn Quince, Facilities and Bond Fund Financial Management
- Damon Hunter, Coordinator Facilities Services Unit
- Jeana Blackman Taylor, Bond Oversight Committee, Member
- Rob Gurdison, Bond Oversight Committee, Member



2015 Capital Improvement Plan Update

Projects completed and underway to date

- 20 new school construction projects
 - \$546.0 million allocated to 16 elementary schools
 - \$82.9 million allocated to Barry and June Gunderson Middle School
 - \$550.8 million allocated to three high schools
- 37 classroom additions
 - \$553.2 million
- 18 replacement schools completed or underway
 - \$539.9 million allocated to 15 elementary schools
 - \$44.7 million K-8 allocated to Jo Mackey iLead Academy for the Digital Sciences
 - \$8.1 million allocated to temporary campuses used as swing schools
 - \$123.2 million allocated to two middle schools
- 5 phased replacement schools completed or underway
 - \$246.7 million allocated to five phased replacement schools
- 82 modernization projects completed or underway
 - \$326.3 million allocated to 82 modernization projects



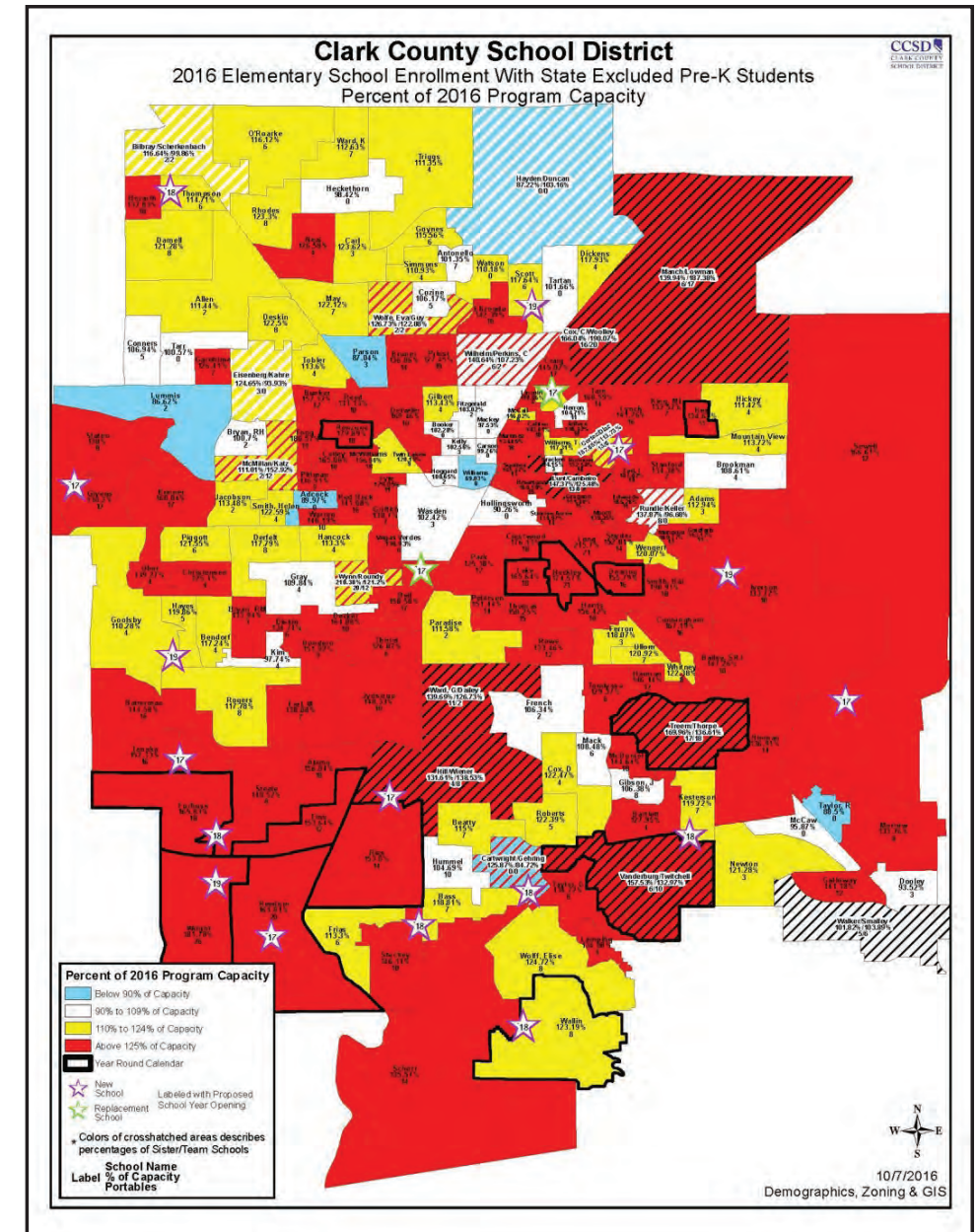
2016-2017

ELEMENTARY ENROLLMENTS

Elementary Schools District-Wide aggregated totals

- School Year 2016-2017 Elementary Enrollment

- Enrollment: 157,205
- Capacity: 122,474
- Percent of Capacity: 128.35%
- (15 Year-Round Schools)
- Seat Deficit: 34,731
- Equivalent 850 seat school need: 41



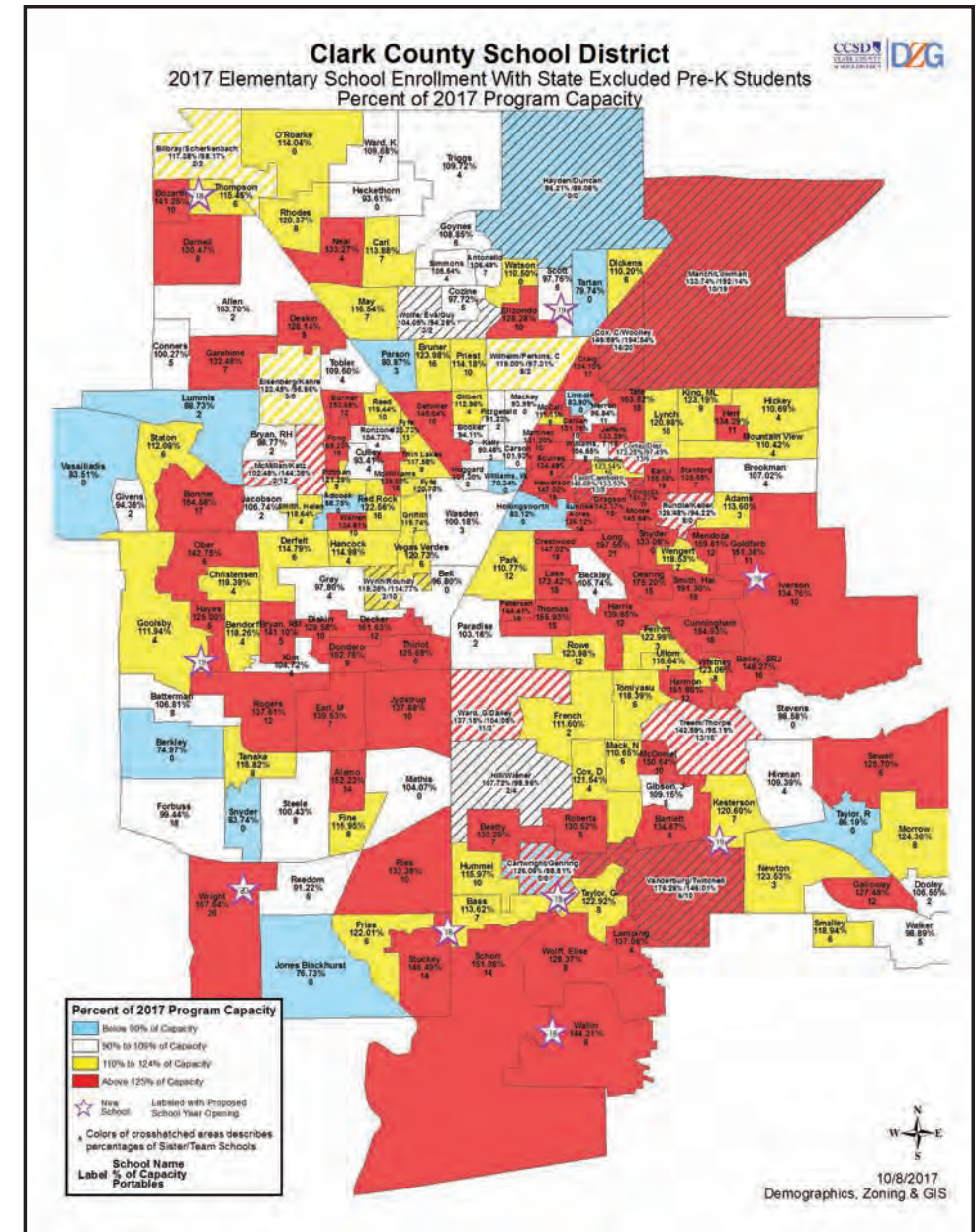
2017-2018

ELEMENTARY ENROLLMENTS

Elementary Schools District-Wide aggregated totals.

- SY 2017-2018 ELEMENTARY ENROLLMENTS
 - Enrollment: 155,569, -1,636 (-1.11%) from previous year.
 - Capacity: 129,829
 - Percent of Capacity: 119.83%
 - (0 Year-Round Schools)
 - Seat needs: 25,740
 - Equivalent 850 seat school need: 30

New Schools			
School	Total Seats	Net Seats Added	
Shelley Berkley Elementary School		850	850
Lomie G. Heard, a Marzano Academy		850	850
Jan Jones Blackhurst Elementary School		850	850
Dr. Beverly S. Mathis Elementary School		850	850
Don and Dee Snyder Elementary School		850	850
Josh Stevens Elementary School		850	850
Billy and Rosemary Vassiliadis Elementary School		850	850
Replacement Schools			
Rex Bell Elementary School		850	307
Lincoln Elementary School		850	207
Building Additions			
Preparatory Institute for Academic Excellence at Charles I.			
West Hall Elementary School		488	488
Total		8138	6952



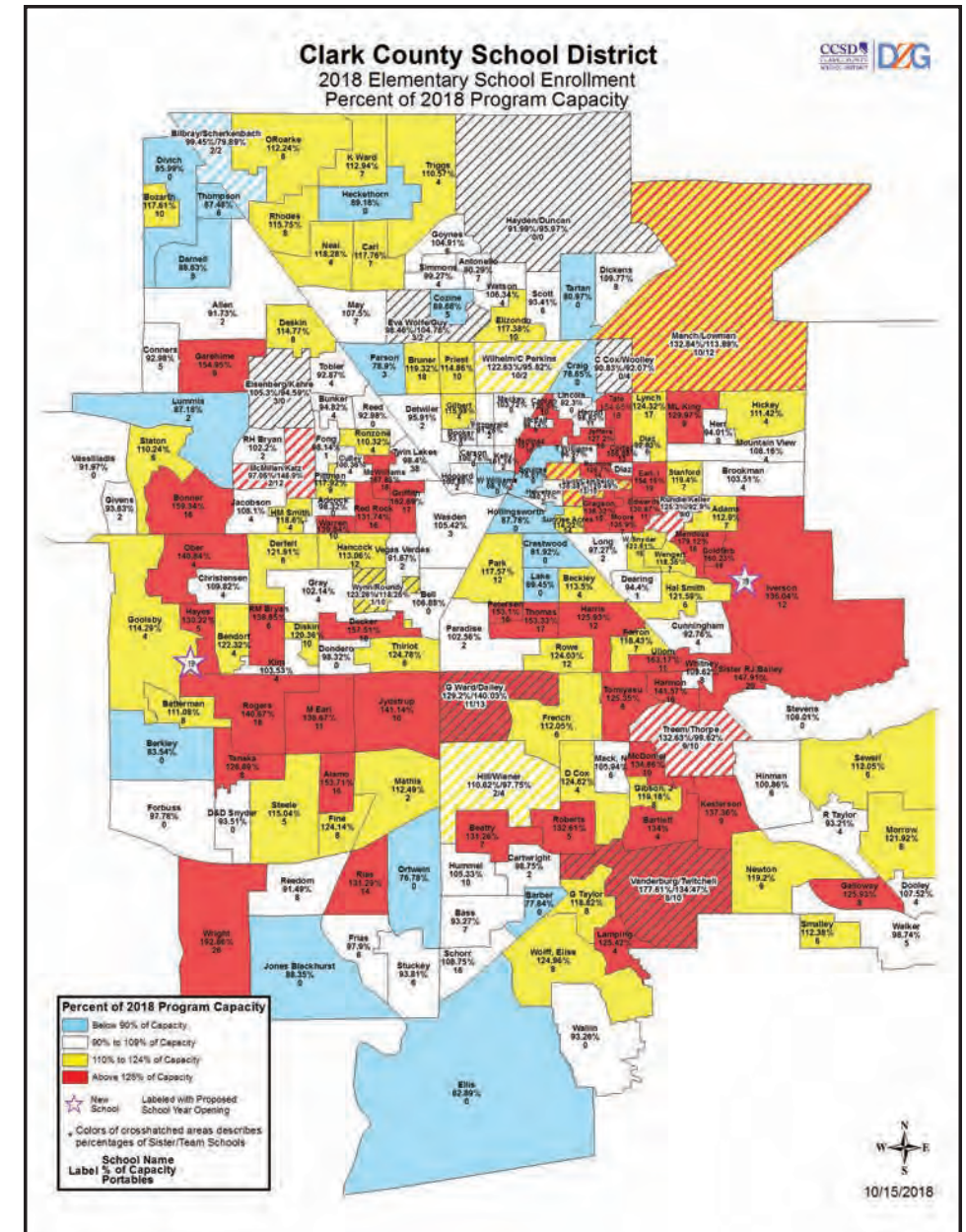
2018-2019

ELEMENTARY ENROLLMENTS

Elementary Schools District-Wide aggregated totals.

- SY 2018-2019 ELEMENTARY ENROLLMENTS
 - Enrollment: 152,278, -1,566 (-1.02%) from previous year.
 - Capacity: 140,316
 - Percent of Capacity: 108.52%
 - Seat Deficit: 11,962
 - Equivalent 850 seat school need: 14

New Schools		
School	Total Seats	Net Seats Added
Shirley A. Barber Elementary School	850	850
Kenneth Divich Elementary School	850	850
Robert and Sandy Ellis Elementary	850	850
Dennis Ortwein Elementary School	850	850
Building Additions (23)		
14 Classroom Additions (235 net seats each) Harvey n. Dondero ES, Helen Her ES	470	470
18 Classroom Additions (322 net seats each) Will Beckley ES, Lois Craig ES, Paul E. Culley ES, Cynthia W. Cunningham ES, Laura Dearing ES, Ollie Detwiler ES, Wing and Lilly Fong ES, Halle Hewetson ES, Robert E. Lake ES, Doris M. Reed, Bertha Ronzone ES, C. P. Squires ES, Vegas Verdes ES, Elaine Wynn ES	5152	5152
22 Classroom Additions (410 net seats each) Berkeley L. Bunker ES, Clyde C. Cox ES, Crestwood ES, Walter V. Long ES, Mary and Zel Lowman ES, Hal Smith ES, Gwendolyn Woolley ES	3280	3280
Total	12302	12302



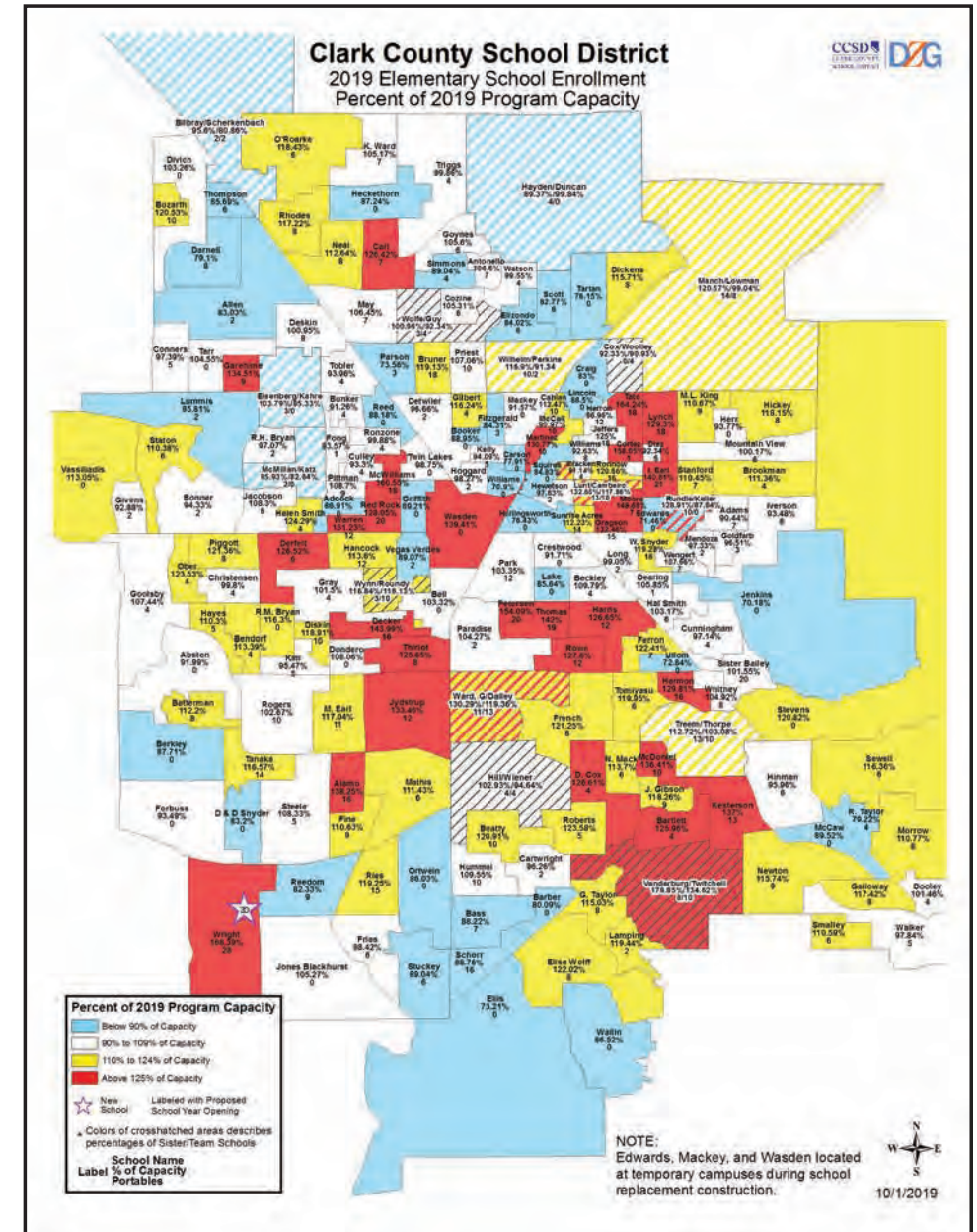
2019-2020

ELEMENTARY ENROLLMENTS

Elementary Schools District-Wide aggregated totals.

- SY 2019-2020 ELEMENTARY ENROLLMENTS
 - Enrollment: 148,994, -3,284 (-2.16%) from previous year.
 - Capacity: 140,997
 - Percent of Capacity: 105.67%
 - Seat Deficit: 7,997
 - Equivalent 850 seat school need: 9

New Schools		
School	Total Seats	Net Seats Added
Sandra B. Abston Elementary School	850	850
Earl N. Jenkins Elementary School	850	850
Replacement Schools		
E. W. Griffith ES	720	265
J. M. Ullom ES	850	268
Twin Lakes ES	720	174
Building Additions (5)		
18 Classroom Additions (322 net seats each) Raul P. Elizondo ES, Dan Goldfarb ES, Edythe and Lloyd Katz ES, John F. Mendoza ES	1288	1288
22 Classroom Additions (410 net seats each) John W. Bonner ES	410	410
Total	5688	4105



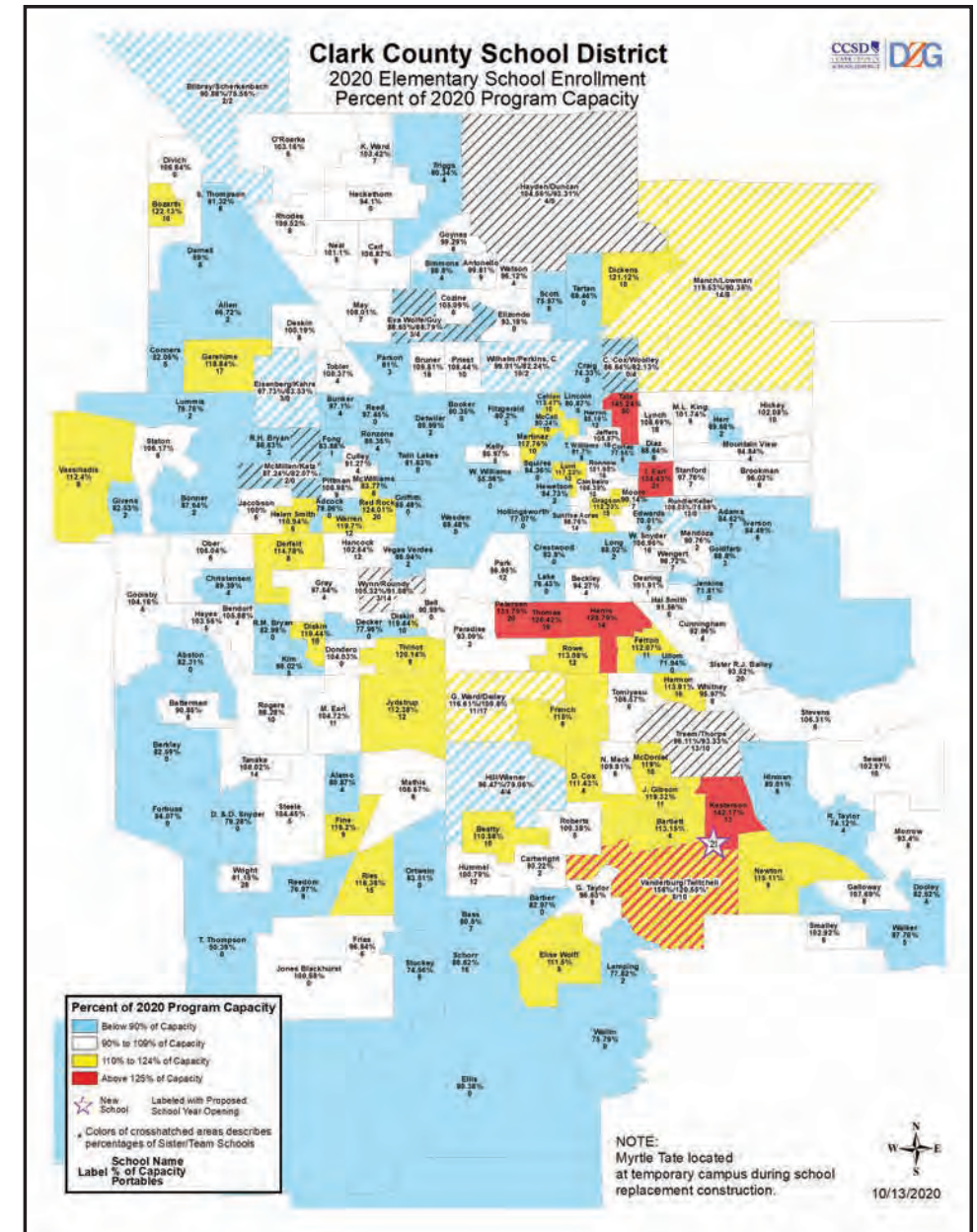
2020-2021

ELEMENTARY ENROLLMENTS

Elementary Schools District-Wide aggregated totals.

- SY 2020-2021 ELEMENTARY ENROLLMENTS
 - Enrollment: 137,689, -11,305 (-7.59%) from previous year.
Enrollment impacted by COVID 19
 - Capacity: 144,055
 - Percent of Capacity: 95.58%
 - Seat needs: -6,366
 - Equivalent 850 seat school need: -7

New Schools		
School	Total Seats	Net Seats Added
Tyrone Thompson Elementary	850	850
Replacement Schools		
Elbert B. Edwards ES	850	361
Jo Mackey K-8 *	800	0
Howard Wasden ES	720	162
Building Additions (5)		
14 Classroom Additions (235 net seats each) Roger M. Bryan ES, William K. Moore ES	470	470
22 Classroom Additions (410 net seats each) Manuel J. Cortez ES	410	410
Total	4100	2253



2021-2022

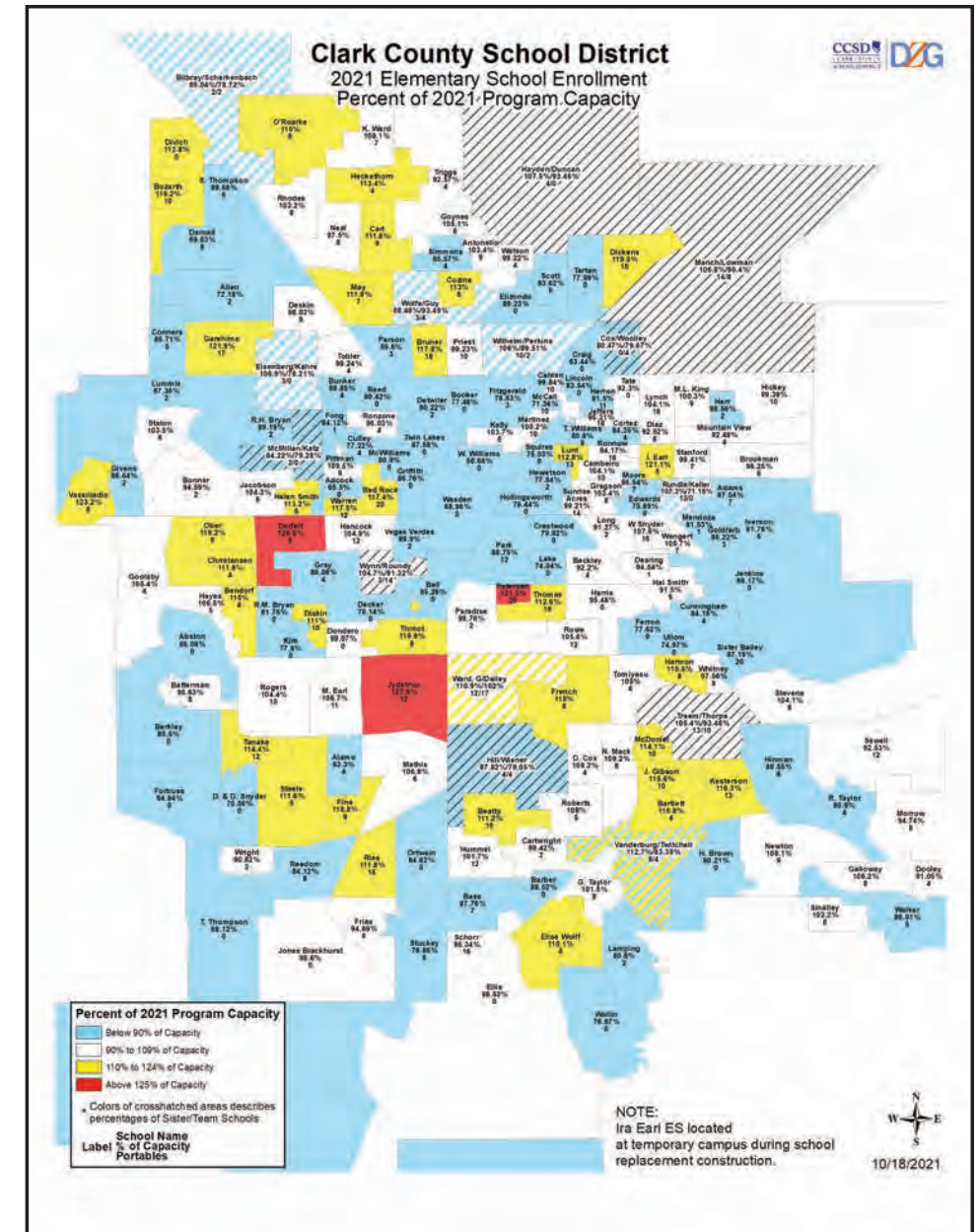
ELEMENTARY ENROLLMENTS

Elementary Schools District-Wide aggregated totals.

- SY 2021-2022 ELEMENTARY ENROLLMENTS (UNOFFICIAL)
 - Enrollment: 138,086 +397 (+0.28%) from previous year.
Enrollment impacted by COVID 19
 - Capacity: 142,982*
 - Percent of Capacity: 96.58%
 - Seat needs: -4,896
 - Equivalent 850 seat school need: -6

New Schools		
School	Total Seats	Net Seats Added
Hannah Marie Brown Elementary School	720	72
Replacement Schools		
William E. Ferron ES	720	17
George E. Harris ES	720	19
Mabel W. Hoggard ES	720	26
Myrtle Tate ES	850	34
Total	3730	169

*Note: All schools allocated a COVID "Sick Room" reducing capacity



2015 CIP Proposed Allocation

Rollover Funds Included (2015 -2035) Rev 5

Bond Fund Availability				\$ 4,196,000,000		\$ 3,506,682,722	\$ 7,702,682,722		
	School Count	June 30 Y-T-D Encumb./Exp.	Revision 1-4		Remaining Budget	Rollover Revision 5		Cumulative Revision 1-5	
			Budget			School Count	Budget	School Count	Budget
New Schools									
Elementary	16	468,138,792		546,028,000		10	347,000,000	26	893,028,000
K-8	0	-		-		0	-	0	-
Middle	1	69,133,722		82,887,000		0	-	1	82,887,000
High (Global Community)	1	2,916,257		45,786,000		3	660,000,004	4	705,786,000
CTA	2	8,043,173		505,000,000		0	-	2	505,000,000
	20	548,231,944		1,179,701,000		13	1,007,000,000	33	2,186,701,000
Land		351,215		75,000,000			-		75,000,000
Total		548,583,159		1,254,701,000			1,007,000,000		2,261,701,000
Additions (Includes Modernization)									
Elementary	37	411,860,805		529,464,000		0	-	37	529,464,000
K-8	0	-		-		0	-	0	-
Middle	0	-		-		0	-	0	-
High	2	-		23,780,000		4	70,000,000	6	93,780,000
CTA	0	-		-		0	-	0	-
Total	39	411,860,805		553,244,000		4	70,000,000	43	623,244,000
Replacement									
Elementary	14	425,725,451		584,603,000		16	537,000,000	30	1,121,603,000
K-8	1	2,497,166		43,926,000		0	-	1	43,926,000
Middle	1	66,762,773		79,266,000		15	1,275,000,000	16	1,354,266,000
K-12	0	-		-		1	100,000,000	1	100,000,000
High	0	-		-		0	-	0	-
CTA	0	-		-		0	-	0	-
	16	494,985,390		707,795,000		32	1,912,000,000	48	2,619,795,000
Swing (Temporary Campus)	2	7,424,953		7,256,000		0	-	2	7,256,000
Total	18	502,410,343		715,051,000		32	1,912,000,000	50	2,627,051,000
Phased Replacements									
Elementary	2	58,633,475		65,270,000		0	-	2	65,270,000
K-8	0	-		-		0	-	0	-
Middle	0	-		-		0	-	0	-
High	2	106,411,230		148,930,000		1	353,000,000	3	501,930,000
CTA	0	-		-		1	25,000,000	1	25,000,000
	4	165,044,705		214,200,000		2	378,000,000	6	592,200,000
K-12 (Sandy Valley)	1	12,503,462		32,533,000		0	-	1	32,533,000
Total	5	177,548,167		246,733,000		2	378,000,000	7	624,733,000
Other									
Modernizations		252,498,749		326,286,000	424,985,000		-		751,271,000
Technology & Equipment		74,867,196		450,000,000	-		-		450,000,000
Bond Issuance & Administration		70,121,393		225,000,000	-		155,000,000		380,000,000
Total Other		397,487,338		1,001,286,000	424,985,000		155,000,000		1,581,271,000
		2,037,889,812		3,771,015,000	4,196,000,000		3,522,000,000		7,718,000,000
Flexibility to utilize remaining budget on Modernization projects.									
Shortfall will be covered by Interest Income						Shortfall	(15,317,278)		(15,317,278)

Flexibility to utilize remaining budget on Modernization projects.

Shortfall will be covered by Interest Income

Shortfall

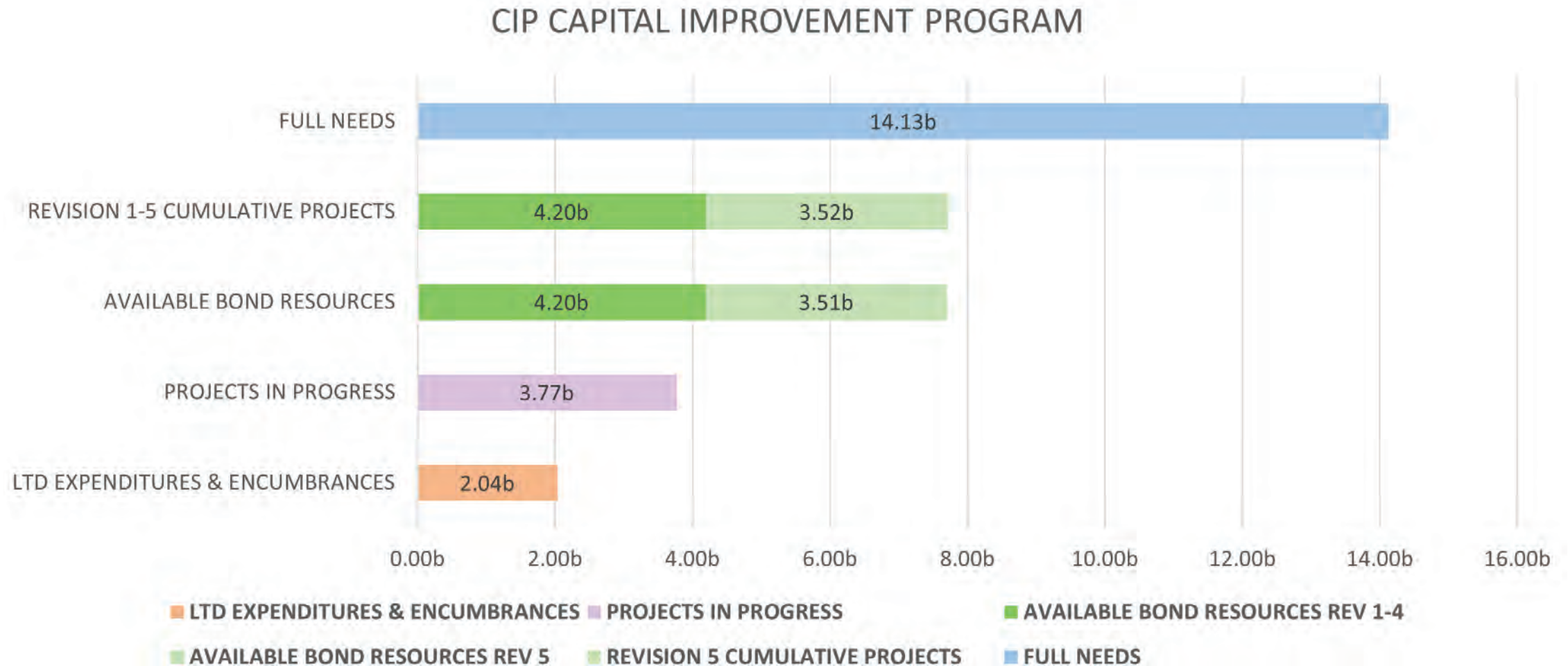
(15,317,278)

(15,317,278)

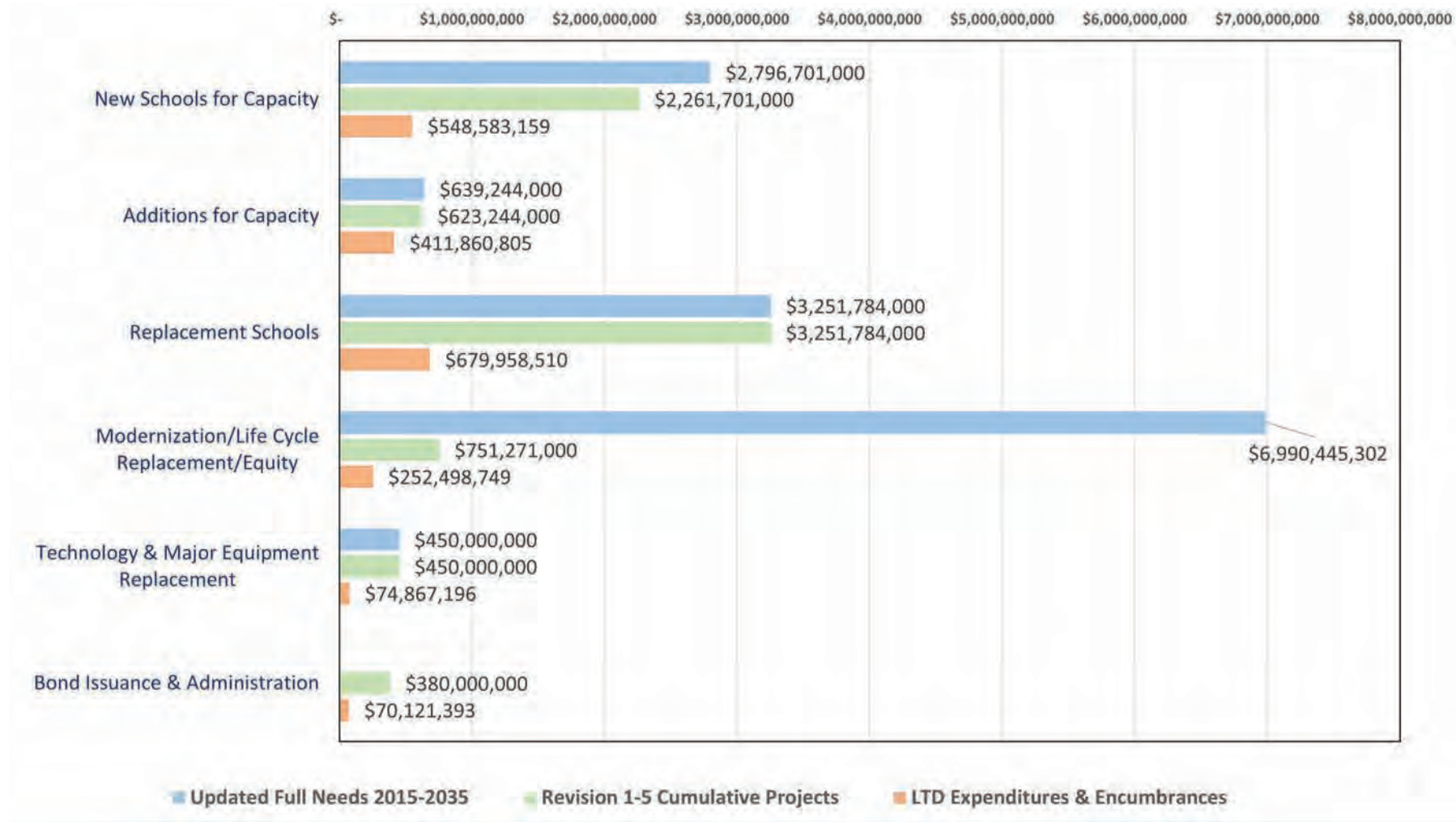
Reference 3.01



CCSD 2015 CIP Rev 5 Summary 2015 - 2035



CCSD 2015 CIP Rev 5 Summary



2015 CIP Revision 5 Decisions

01. Allow Facilities and Bond Fund Financial Management the flexibility to reallocate \$525 million in funds from technology and land acquisition for modernization
02. Replace 16 elementary schools and 15 middle schools
 - 02a. Design new elementary & middle school prototypes
 - 02b. Schools that will be replaced on site
 - 02c. Schools that will require a swing school strategy
03. Replace Matt Kelly ES
04. Request funds for new school at St. Jude's Ranch
05. Construct cafeteria additions at Basic, Eldorado, & Bonanza
06. Convert Laughlin JHS/HS in K-12
07. Construct Las Vegas Academy Master Plan
08. Construct five high schools
 - 08a. Construct comprehensive high school in Southwest
 - 08b. Construct comprehensive high school in Northwest
 - 08c. Convert Dell Robison to a choice high school
 - 08d. Construct choice high school in Southeast
 - 08e. Construct choice high school in West
09. Construct 10 new elementary schools



Reallocate Funds for Modernization Work

- Technology is currently spending approximately 13 million dollars a year of bond funds
 - Medium-term bonds are being proposed to fund technology purchases moving forward
 - Flexibility needs to be available to allocate these funds to modernization and/or land acquisition projects due to the greater needs in these areas
- Land acquisition is uncertain
 - Flexibility needs to be available to allocate additional funds here from technology funds

Decision # 01

Allow Facilities and Bond Fund Financial Management the flexibility to reallocate \$525 million in funds from technology and land acquisition for modernization work while maintaining the flexibility to increase land acquisition funds from technology

Bond Fund Availability		\$ 4,196,000,000			\$ 3,506,682,722		\$ 7,702,682,722		
		Revision 1-4			Remaining Budget	Rollover Revision 5		Cumulative Revision 1-5	
	School Count	June 30 Y-T-D Encumb./Exp.	Budget			School Count	Budget	School Count	Budget
New Schools									
Elementary	16	468,138,792	546,028,000		10	347,000,000	26	893,028,000	
K-8	0	-	-		0	-	0	-	
Middle	1	69,133,722	82,887,000		0	-	1	82,887,000	
High (Global Community)	1	2,916,257	45,786,000		3	660,000,000	4	705,786,000	
CTA	2	8,043,173	505,000,000		0	-	2	505,000,000	
	20	548,231,944	1,179,701,000		13	1,007,000,000	33	2,186,701,000	
Land		351,215	75,000,000			-		75,000,000	
Total		548,583,159	1,254,701,000			1,007,000,000		2,261,701,000	
Additions (Includes Modernization)									
Elementary	37	411,860,805	529,464,000		0	-	37	529,464,000	
K-8	0	-	-		0	-	0	-	
Middle	0	-	-		0	-	0	-	
High	2	-	23,780,000		4	70,000,000	6	93,780,000	
CTA	0	-	-		0	-	0	-	
Total	39	411,860,805	553,244,000		4	70,000,000	43	623,244,000	
Replacement									
Elementary	14	425,725,451	584,603,000		16	537,000,000	30	1,121,603,000	
K-8	1	2,497,166	43,926,000		0	-	1	43,926,000	
Middle	1	66,762,773	79,266,000		15	1,275,000,000	16	1,354,266,000	
K-12	0	-	-		1	100,000,000	1	100,000,000	
High	0	-	-		0	-	0	-	
CTA	0	-	-		0	-	0	-	
	16	494,985,390	707,795,000		32	1,912,000,000	48	2,619,795,000	
Swing (Temporary Campus)	2	7,424,953	7,256,000		0	-	2	7,256,000	
Total	18	502,410,343	715,051,000		32	1,912,000,000	50	2,627,051,000	
Phased Replacements									
Elementary	2	58,633,475	65,270,000		0	-	2	65,270,000	
K-8	0	-	-		0	-	0	-	
Middle	0	-	-		0	-	0	-	
High	2	106,411,230	148,930,000		1	353,000,000	3	501,930,000	
CTA	0	-	-		1	25,000,000	1	25,000,000	
	4	165,044,705	214,200,000		2	378,000,000	6	592,200,000	
K-12 (Sandy Valley)	1	12,503,462	32,533,000		0	-	1	32,533,000	
Total	5	177,548,167	246,733,000		2	378,000,000	7	624,733,000	
Other									
Modernizations		252,498,749	326,286,000	424,985,000		-		751,271,000	
Technology & Equipment		74,867,196	450,000,000	-		-		450,000,000	
Bond Issuance & Administration		70,121,393	225,000,000	-		155,000,000		380,000,000	
Total Other		397,487,338	1,001,286,000	424,985,000		155,000,000		1,581,271,000	
		2,037,889,812	3,771,015,000	4,196,000,000		3,522,000,000		7,718,000,000	
Flexibility to utilize remaining budget on Modernization projects.									
Shortfall will be covered by Intertest Income					Shortfall	(15,317,278)		(15,317,278)	

Replace 16 Elementary Schools

School	Year Built	Trustee District	Municipality	Five Year FCI	Ten Year FCI	Tentative Opening
William Bennet ES	1986	A	Clark County/Laughlin	0.52	0.75	August 2024
Mountain View ES	1954	B	Clark County	0.53	0.69	August 2024
Red Rock ES	1955	C	Las Vegas	0.44	0.70.	August 2024
Walter Bracken ES	1961	D	Las Vegas	0.39	0.76	August 2025
Laura Dearing ES (Original Building Only)*	1963	G	Clark County	0.34	0.46	August 2025
Doris Hancock ES	1964	E	Clark County	0.39	0.57	August 2025
Helen Smith ES	1974	E	Las Vegas	0.62	0.72	August 2026
Cyril Wengert ES	1971	G	Clark County	0.38	0.52	August 2026
Helen Stewart ES	1972	G	Clark County	0.65	0.79	August 2027
Matt Kelly ES	1960	C	Las Vegas	0.40	0.52	August 2027
Bill Tomiyasu ES	1974	G	Clark County	0.60	0.75	August 2028
Marion Cahlan ES	1963	C	North Las Vegas	0.39	0.65	August 2029
Pat Diskin ES	1973	F	Las Vegas	0.49	0.68	August 2030
Fay Herron ES	1963	D	North Las Vegas	0.38	0.69	August 2030
Lewis Rowe ES	1964	G	Clark County	0.56	0.69	August 2030
Harvey Dondero ES (Original Building Only)*	1976	F	Clark County	0.30	0.42	August 2031

* = The original building will be replaced, the recent classroom additions will remain

**= Constructed out of portables

ES = Elementary School

Replace 15 Middle Schools

Middle School Name	Year Built	Trustee District	Municipality	Five Year FCI	Ten Year FCI	Tentative Opening
J. Harold Brinley MS	1967	C	Las Vegas	0.54	0.77	August 2025
C.W. Woodbury MS	1972	G	Clark County	0.70.	0.86	August 2025
Frank Garside JHS	1962	E	Las Vegas	0.49	0.59	August 2025
Ed Von Tobel MS	1965	D	Clark County	0.52	0.75	August 2026
Dell Robison MS	1973	D	Las Vegas	0.43	0.49	August 2027
Mahlon Brown Academy of International Studies JHS	1982	A	Henderson	0.52	0.68	August 2027
James Cashman MS	1962	C	Clark County	0.43	0.62	August 2027
Indian Springs K-12	1952MS/HS 1980 ES	E	Clark County	0.53	0.73	August 2027
K.O. Knudson Academy of Arts MS	1961	D	Las Vegas	0.41	0.57	August 2028
Jim Bridger MS	1959	C	North Las Vegas	0.45	0.56	August 2028
Robert O. Gibson MS	1962	C	Las Vegas	0.42	0.58	August 2028
Kenny C. Guinn MS	1978	F	Clark County	0.39	0.56	August 2029
Hyde Park MS	1957	C	Las Vegas	0.42	0.55	August 2030
Helen C. Cannon MS	1976	G	Clark County	0.61	0.77	August 2031
William E. Orr MS	1965	G	Clark County	0.15	0.25	August 2034

JHS = Junior High School
MS = Middle School

Design New Elementary and Middle School Prototypes

Design 3 New Elementary School Prototypes and 2 New Middle School Prototypes

- Existing elementary school prototypes were originally designed over 10 years ago
- Existing middle school prototypes were originally designed almost 20 years ago
- Existing middle school prototype (1,750 students) is too large for most of the middle schools being replaced currently
- Design 2 new middle school prototypes with the flexibility to be expanded from 1,000 - 1,600 students
- Recent changes in the education specifications need to be incorporated

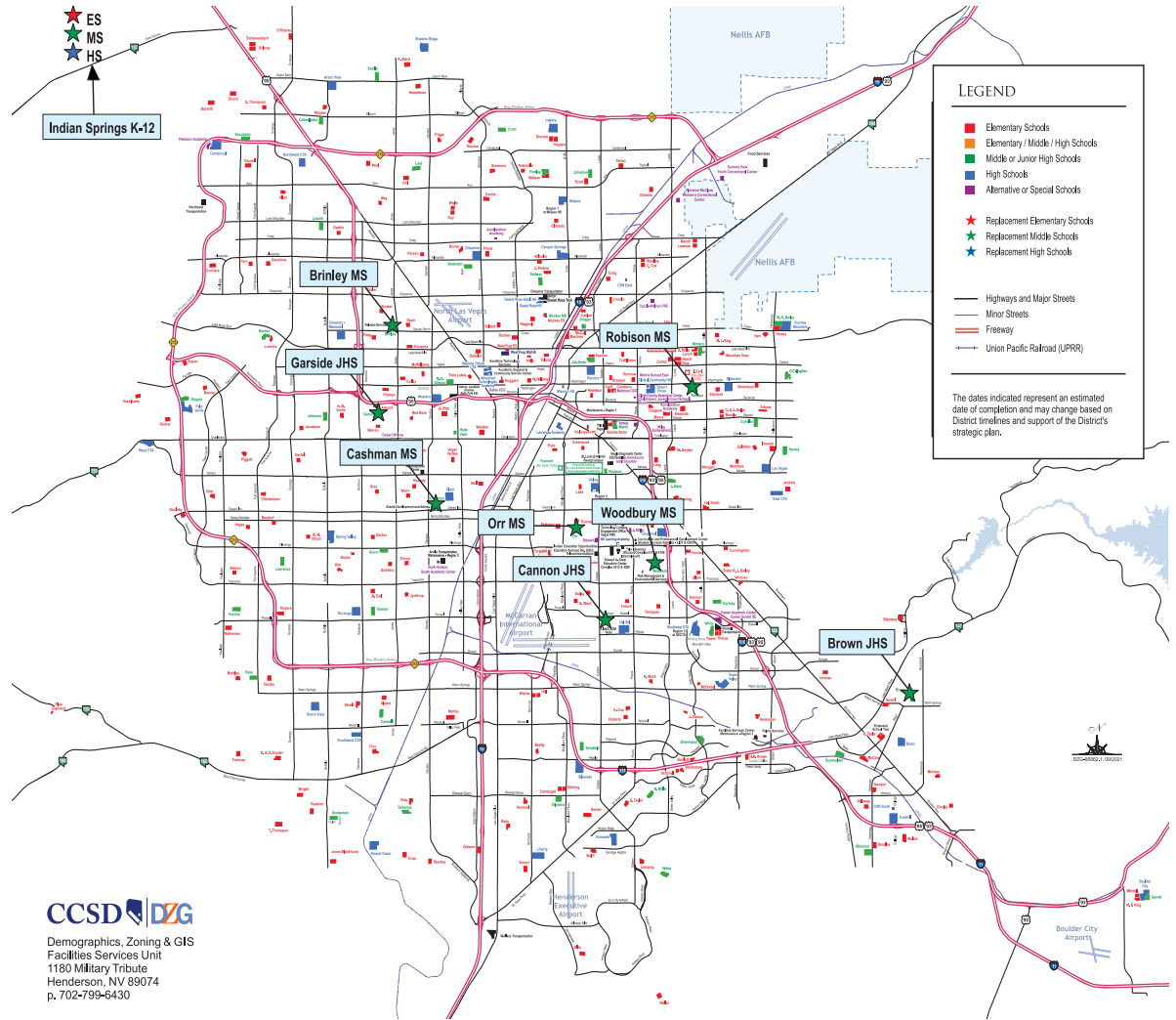
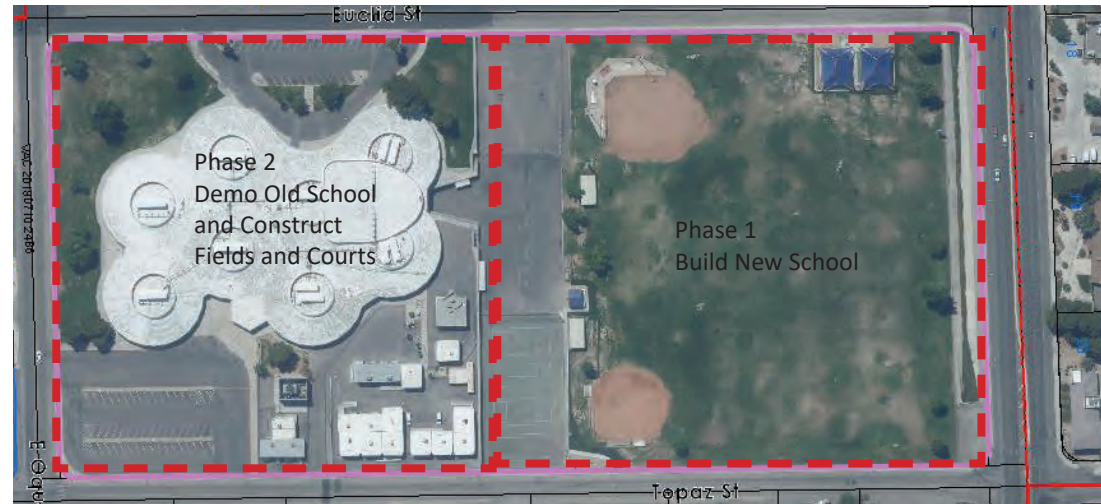
Decision # 02a

Approve the development of five new prototype school designs



Schools To Replace On Site

School	Year Built	5 Year FCI	10 Year FCI	Planned Opening
Harold Brinley MS	1967	0.56	0.79	2025
C.W. Woodbury MS	1972	0.67	0.83	2025
Frank Garside MS	1962	0.49	0.59	2025
Dell Robison MS	1973	0.43	0.49	2027
Mahlon Brown Academy	1982	0.52	0.68	2027
Indian Springs K-12	1952 MS/HS 1980 ES	0.53	0.67	2027
James Cashman MS	1962	0.42	0.58	2027
Helen Cannon MS	1976	0.63	0.78	2031
William Orr MS	1965	0.17	0.27	2034



Decision # 02b

Approve the replacement of listed schools onsite to minimize disruption to students

ES = Elementary School
JHS = Junior High School
MS = Middle School
HS = High School

Swing School Strategy

Fyfe Swing School

Red Rock ES
Hancock ES
Helen Smith ES
R.O. Gibson MS
Hyde Park MS

Heard Swing School

Mountain View ES
Bracken ES

St. Louis Swing School

Ruby Thomas ES
Dearing ES
K.O. Knudson MS

Del Sol Swing School

Tomiyasu ES
Rowe ES

Guinn Swing School

Guinn MS
Diskin ES
Dondero ES

Von Tobel Swing School

Von Tobel MS
Bridger MS
Cahlan ES
Herron ES

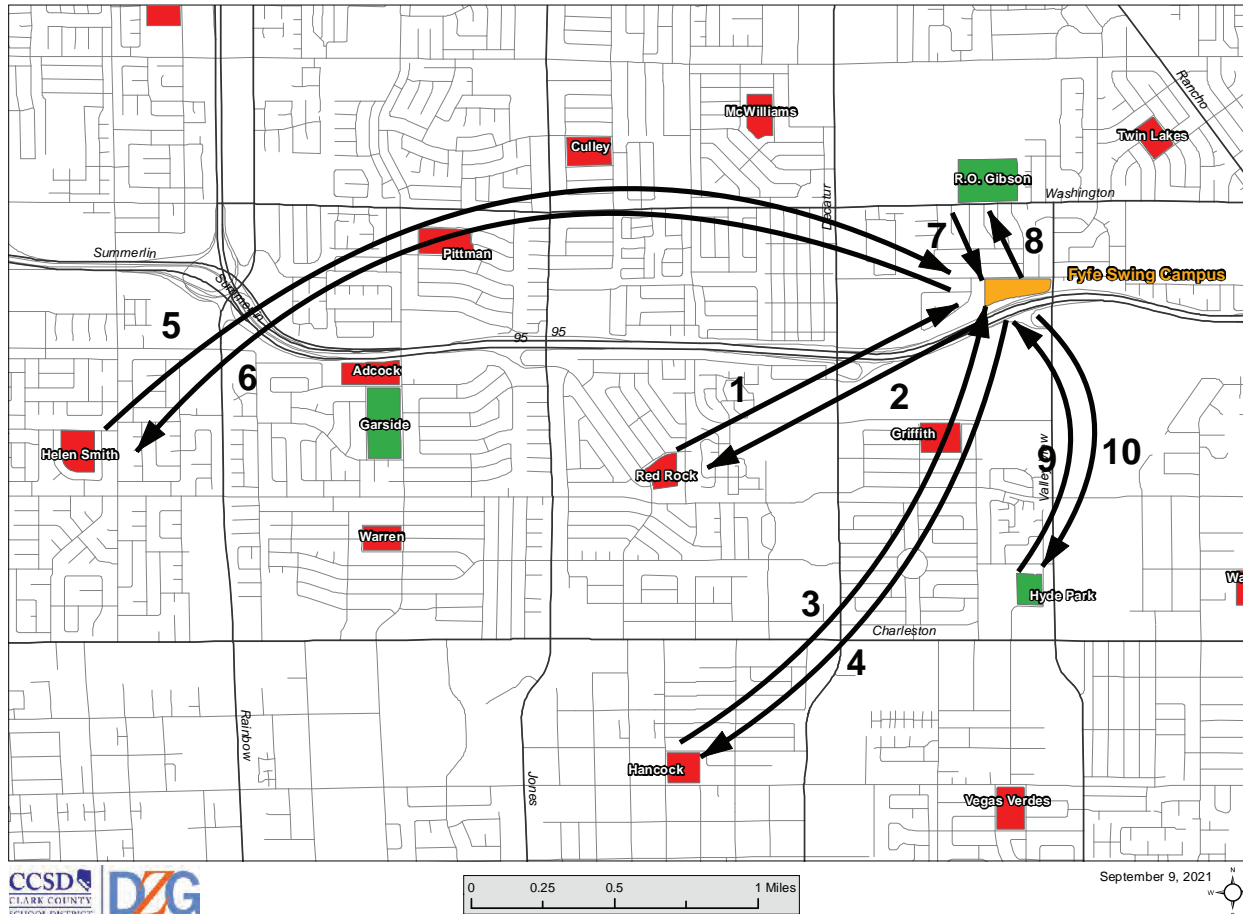
Old PBS Swing School

Helen Stewart ES



Ruth Fyfe Swing School

Implementation Strategy for Hancock ES, Helen Smith ES, Red Rock ES, R.O. Gibson MS, and Hyde Park MS



School Year 2023 - 2024

1. Red Rock ES moves into Fyfe Swing School

School Year 2024 - 2025

2. Red Rock ES returns to permanent campus

3. Hancock ES moves into Fyfe Swing School

School Year 2025 - 2026

4. Hancock ES returns to permanent campus

5. Helen Smith moves into Fyfe Swing Campus

School Year 2026 - 2027

6. Helen Smith ES returns to permanent campus

7. R.O. Gibson MS moves into Fyfe Swing Campus

School Year 2028 - 2029

8. R.O. Gibson MS returns to permanent campus

9. Hyde Park MS moves into Fyfe Swing Campus

School Year 2030 - 2031

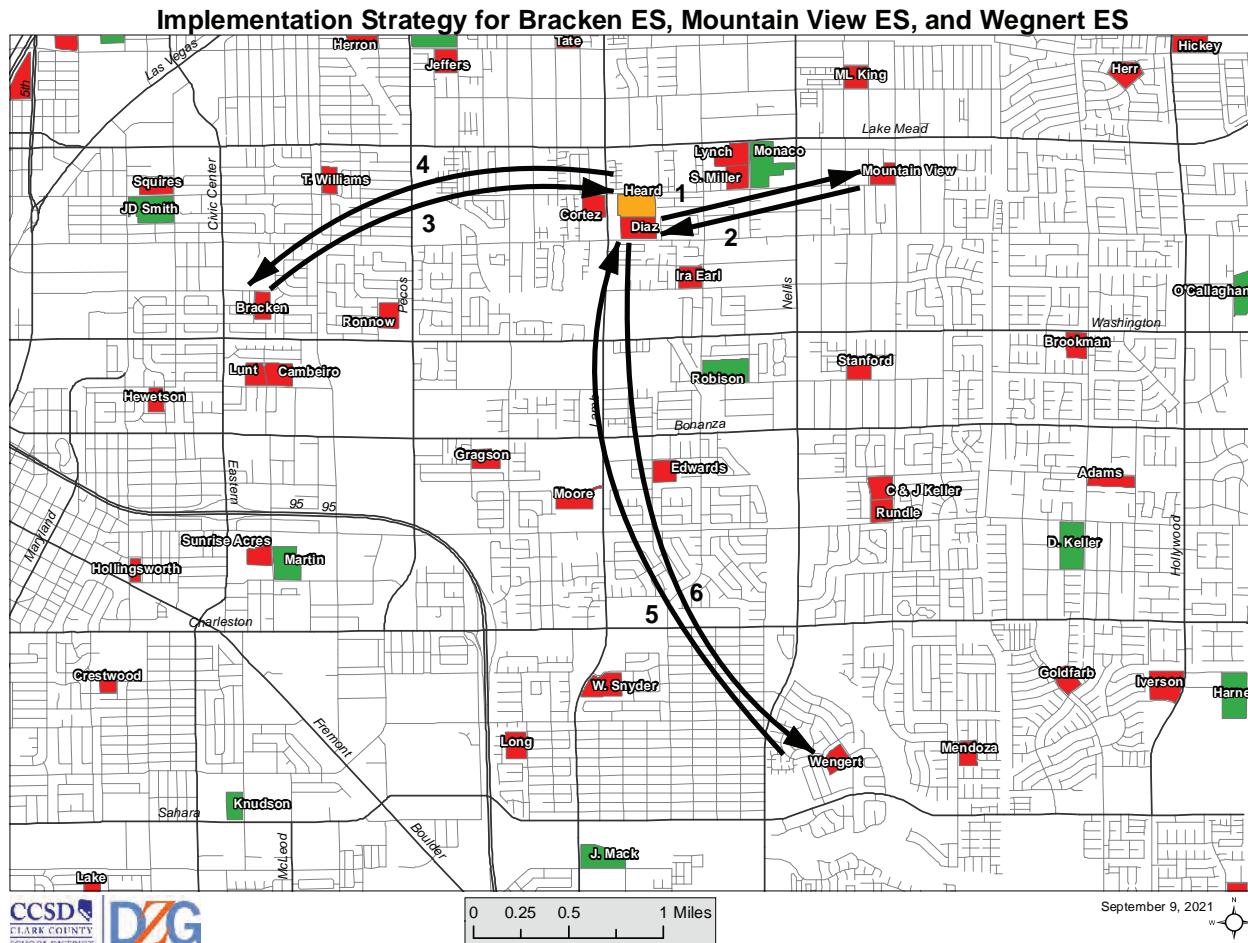
10. Hyde Park returns to permanent campus

Decision # 02c1

Approve the Ruth Fyfe swing school strategy

ES = Elementary School
JHS = Junior High School
MS = Middle School
HS = High School

Lomie Heard Swing School



School Year 2023 - 2024

1. Mountain View ES moves into Heard Swing School

School Year 2024 - 2025

2. Mountain View ES returns to permanent campus

3. Bracken ES moves into Heard Swing School

School Year 2025 - 2026

4. Bracken ES returns to permanent campus

5. Wengert ES moves into Heard Swing School

School Year 2026 - 2027

6. Wengert ES returns to permanent campus

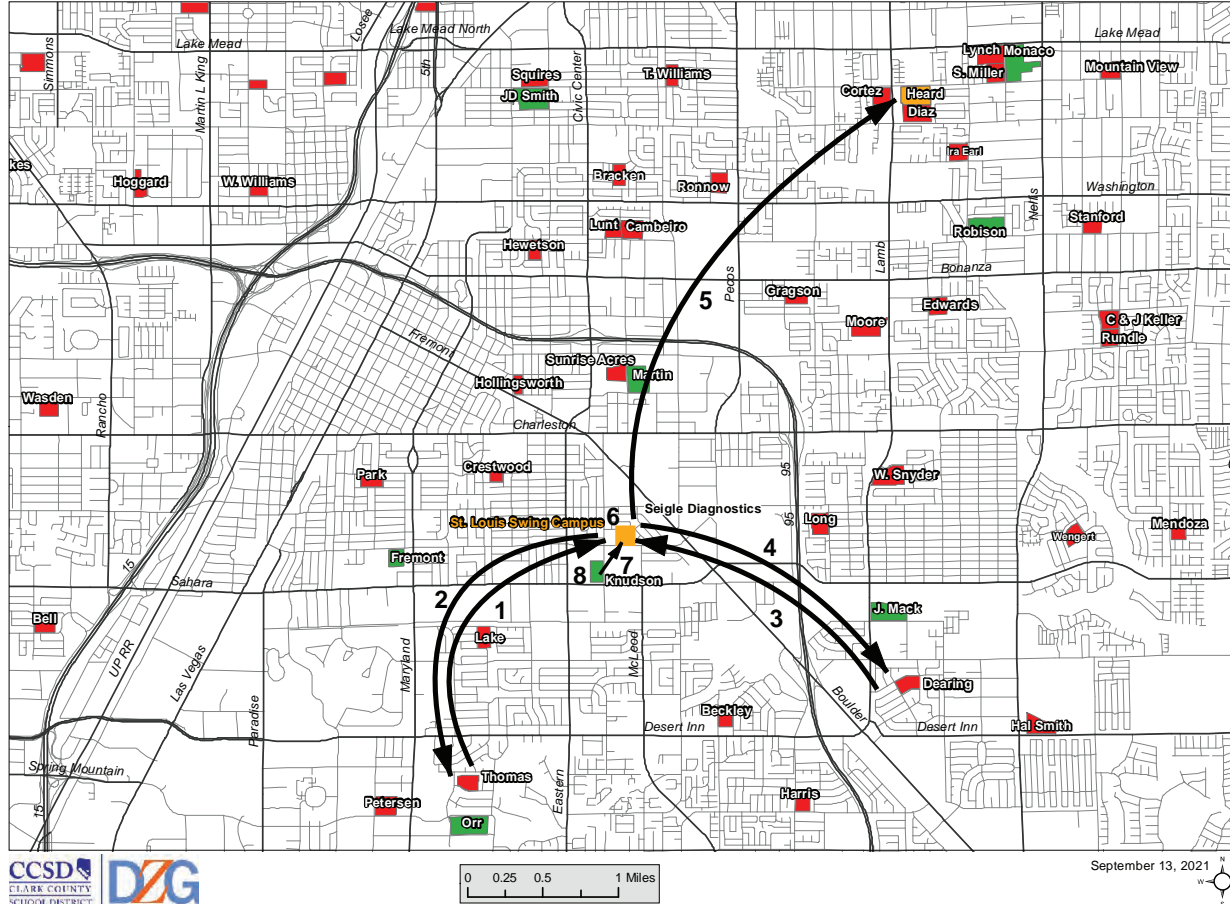
Decision # 02c2

Approve the Lomie Heard swing school strategy

ES = Elementary School
JHS = Junior High School
MS = Middle School
HS = High School

St. Louis Swing Campus

Implementation Strategy for Dearing ES, Thomas ES, Knudson MS, and Siegle Diagnostics



School Year 2022 - 2023

1. Ruby Thomas ES moves into St. Louis Swing School (approved rev 3)

School Year 2024 - 2025

2. Ruby Thomas ES returns to permanent campus
3. Dearing ES moves into St. Louis Swing School

School Year 2025 - 2026

4. Dearing ES returns to permanent campus

School Year 2026 - 2027

5. Seigle Diagnostics moves off St. Louis campus

6. Demo St. Louis Swing Campus to replace K.O. Knudson MS

School Year 2028 - 2029

7. K.O. Knudson MS moves into new campus

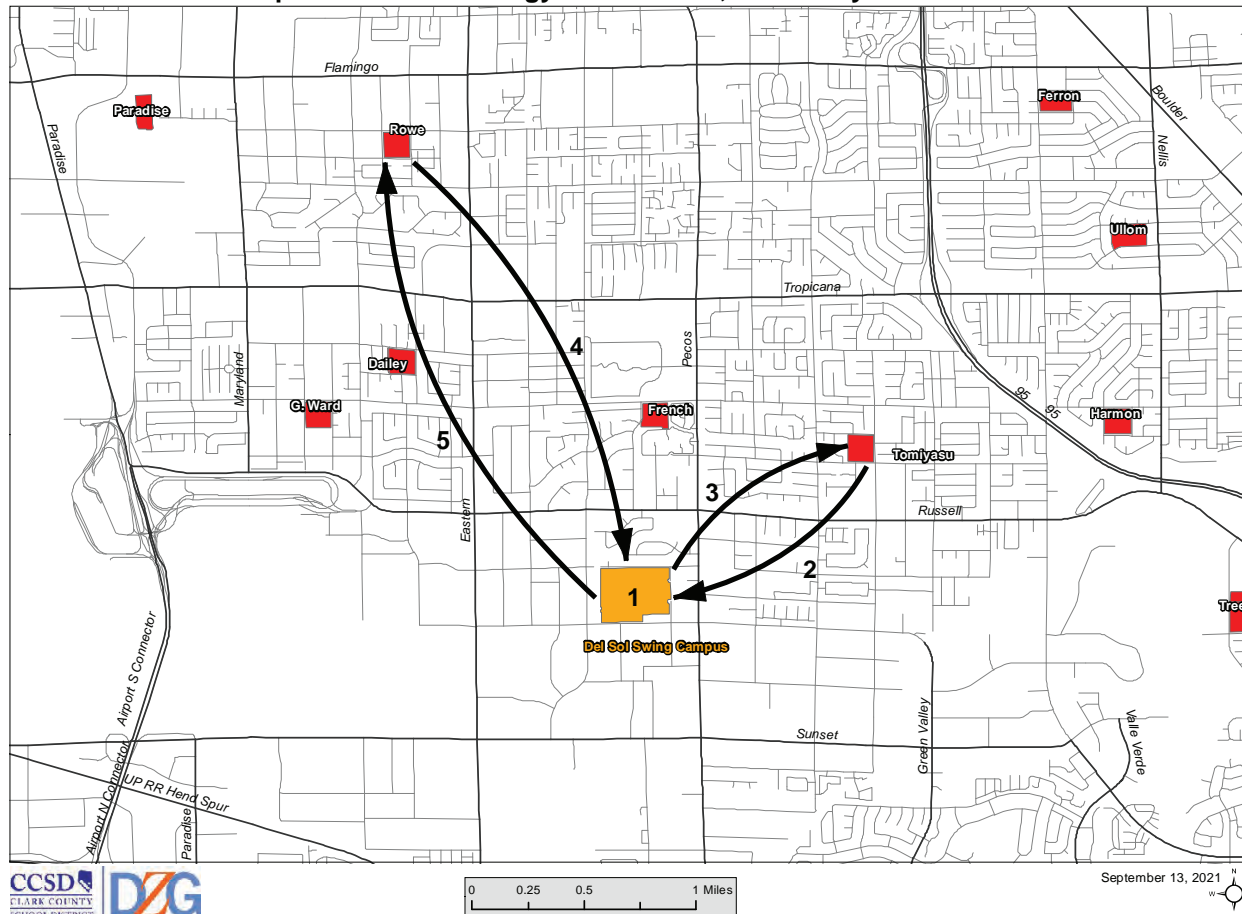
Decision # 02c3

Approve the St. Louis Campus swing school strategy

ES = Elementary School
JHS = Junior High School
MS = Middle School
HS = High School

Del Sol Swing Campus

Implementation Strategy for Rowe ES, and Tomiyasu ES



School Year 2026 - 2027

1. Construct Swing School on 5 acres at Del Sol HS

School Year 2027 - 2028

2. Tomiyasu ES moves into Del Sol Swing School

School Year 2028 - 2029

3. Tomiyasu ES returns to permanent campus

4. Rowe ES moves to Del Sol Swing Campus

School Year 2030 - 2031

5. Rowe ES returns to permanent campus

6. Convert portables for Links program



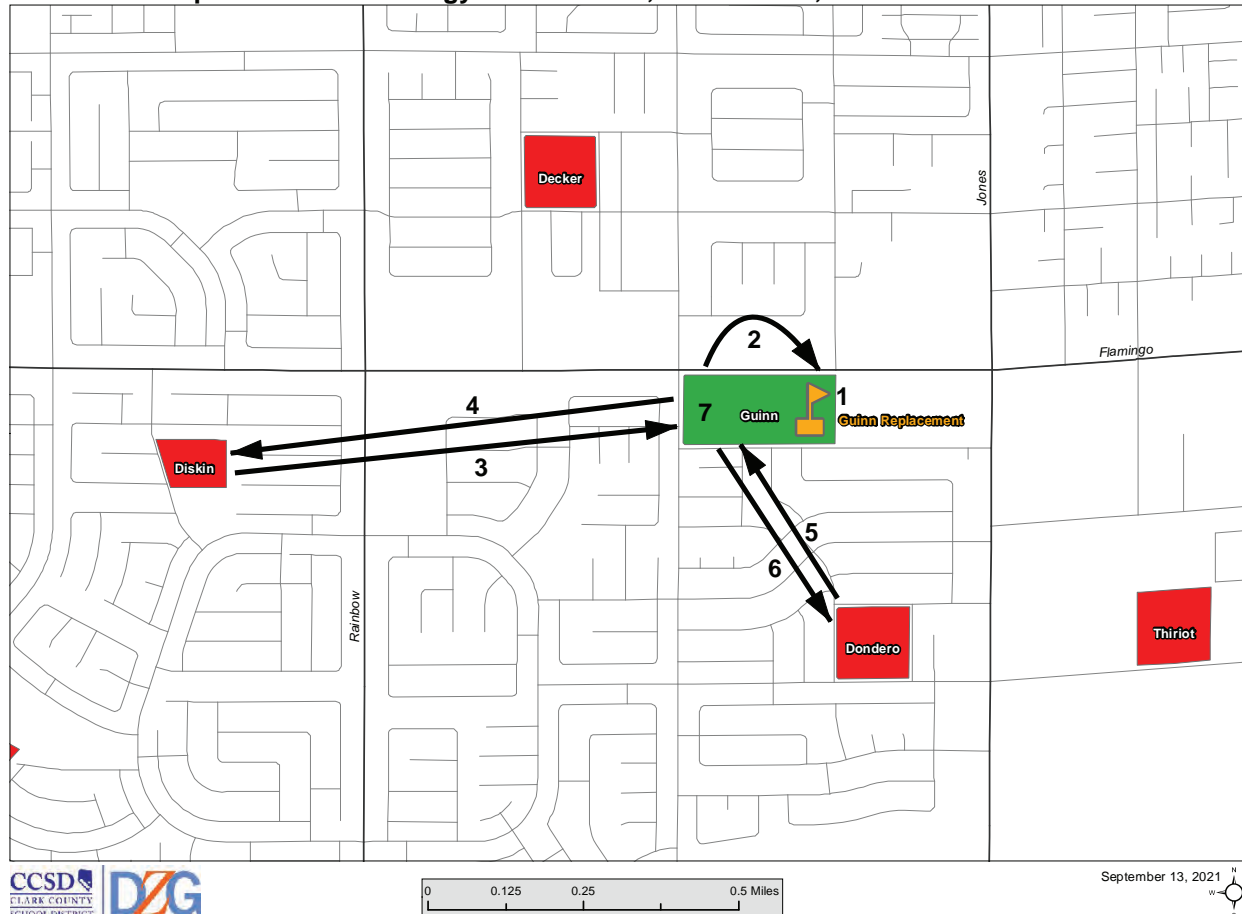
Decision # 02c4

Approve the Del Sol swing school strategy

ES = Elementary School
JHS = Junior High School
MS = Middle School
HS = High School

Kenny Guinn Swing School

Implementation Strategy for Diskin ES, Dondero ES, and Guinn MS



School Year 2027 - 2028

1. Build new Guinn MS on adjacent fields

School Year 2029 - 2030

2. Guinn MS moves into new school
3. Diskin ES moves into old Guinn MS

School Year 2030 - 2031

4. Diskin ES returns to permanent campus
5. Dondero ES moves into old Guinn

School Year 2031 - 2032

6. Dondero ES returns to permanent campus
7. Demo old Guinn and construct new fields



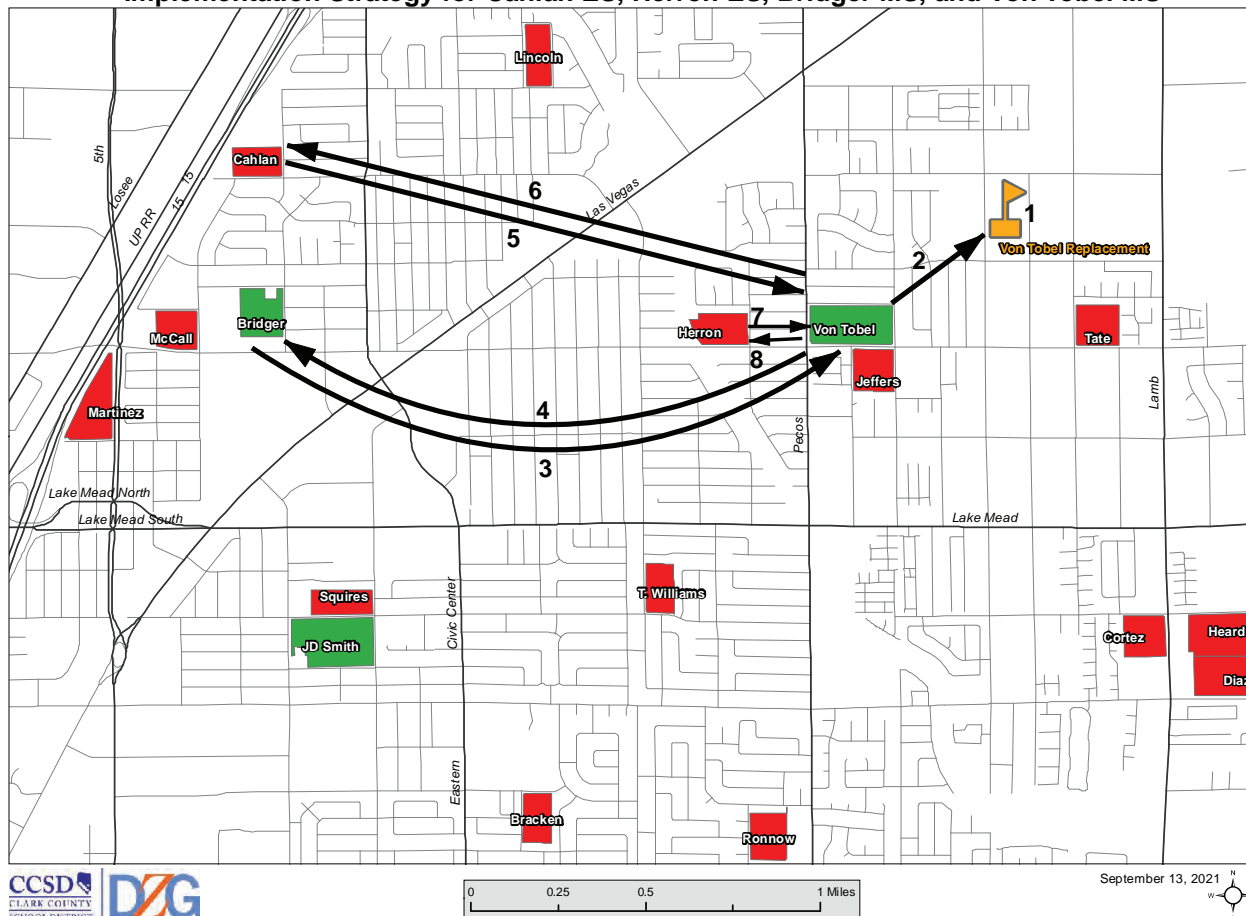
Decision # 02c5

Approve the Kenny Guinn swing school strategy

ES = Elementary School
JHS = Junior High School
MS = Middle School
HS = High School

Ed Von Tobel Swing Campus

Implementation Strategy for Cahlan ES, Herron ES, Bridger MS, and Von Tobel MS



School Year 2024 - 2025

1. Build new Von Tobel MS on 20 acre site near Von Tobel

School Year 2026 - 2027

2. Von Tobel MS moves into new campus
3. Bridger MS moves into Von Tobel Swing School

School Year 2028 - 2029

4. Bridger MS returns to permanent campus
5. Cahlan ES moves into Von Tobel Swing Campus

School Year 2029 - 2030

6. Cahlan ES returns to permanent campus
7. Herron ES moves into Von Tobel Swing Campus

School Year 2030 - 2031

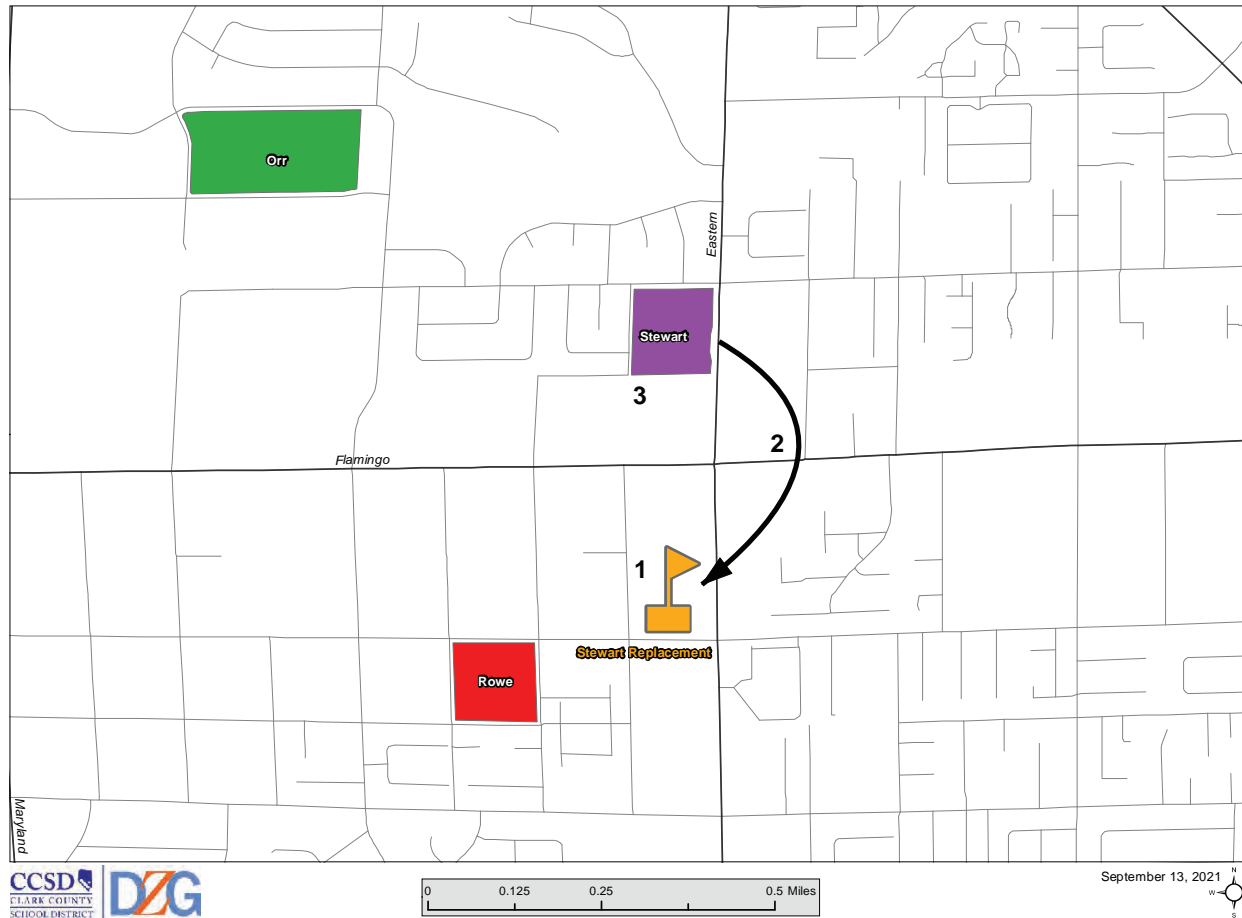
8. Herron ES returns to permanent campus

Decision # 02c6

Approve the Ed Von Tobel swing school strategy

ES = Elementary School
JHS = Junior High School
MS = Middle School
HS = High School

Old PBS Swing Campus



School Year 2026 - 2027

1. Build new Stewart K-12 on old PBS Campus

School Year 2027 - 2028

2. Stewart K-12 moves into new campus
3. Convert old Stewart K-12 into office space

Decision # 02c7

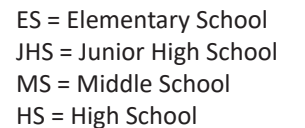
Approve the Old PBS Campus swing school strategy

ES = Elementary School
JHS = Junior High School
MS = Middle School
HS = High School

Matt Kelly Elementary

- Construct a new 400 seat elementary that includes wrap around services for the community and a possible partnership with a community partner
- Develop a unique design based on a “Community School Concept”
- Recommend forming a building design committee consisting of representatives from CCSD and the community
- A series of robust public input meetings will be held during the design process
- Planned opening for the 2027-2028 school year

Approve replacement of Matt Kelly Elementary School with a new 400 seat campus



Construct School at St. Jude's Ranch

- Create a partnership with St. Jude's Ranch to build and operate a new school at their campus in Boulder City
- School will serve trafficked teens
- Students will live on site at Saint Jude's Ranch
- Approximate student body of 60
- Cost of approximately \$5 million



Decision # 04

Approve allocation of five million dollars for the design and construction of a school at St. Jude's Ranch

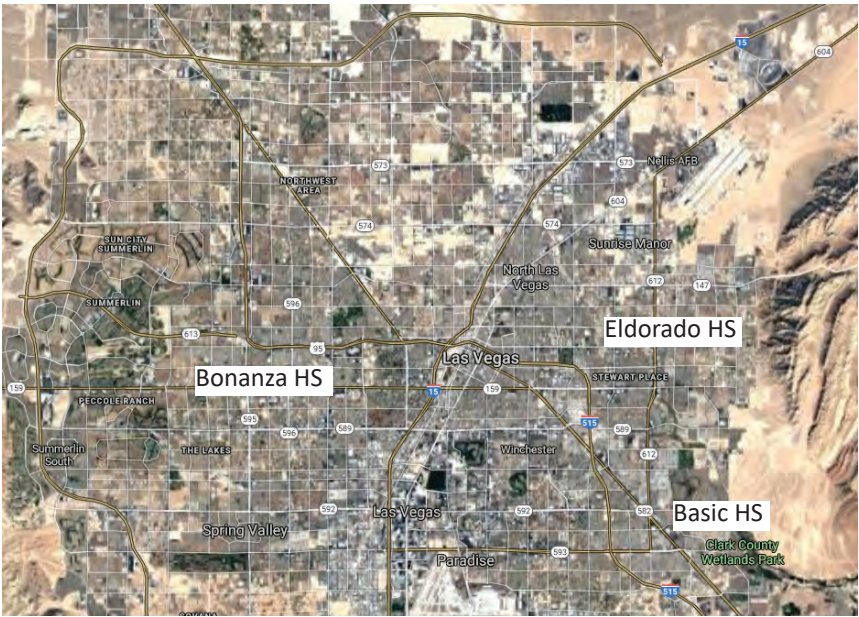
ES = Elementary School
JHS = Junior High School
MS = Middle School
HS = High School

Construct Cafeteria Additions at Eldorado, Bonanza, and Basic High Schools

School Name	Year Built	Capacity	2021 Enrollment	% of Capacity	Five Year FCI	Ten Year FCI	Cafeteria SF	Planned Opening
Eldorado HS	1972	2,331	2,043	87.64%	0.28	0.42	9,500	August 2025
Bonanza HS	1974	2,359	2,082	88.26%	0.47	0.55	9,500	August 2026
Basic HS	1971	2,046	2,586	126.39%	0.41	0.54	10,300	August 2026

Project Info:

- When the schools were originally constructed they were open campuses and the cafeterias were designed with the assumption that a portion of the students would leave campus for lunch therefore it was not designed to accommodate the full capacity of the school



Decision # 05

Approve construction of cafeteria additions at Eldorado, Bonanza, and Basic High Schools

ES = Elementary School
JHS = Junior High School
MS = Middle School
HS = High School

William Bennett Elementary School & Laughlin Middle/High School

School Name	Year Built	Capacity	2021 Enrollment	% of Capacity	Five Year FCI	Ten Year FCI
Bennett ES	1986	446	367	77.58%	0.52	0.75
Laughlin MS/HS	1991	1,209	365	30.19%	0.44	0.53
Totals		1,655	732	44.23%		

Laughlin K-12 Campus

- Turn Laughlin MS/HS into a K-12 school, build new auxiliary gym and new kindergarten classrooms and move Bennett ES to the new K-12 school
- Principal currently oversees both campuses
- Represents the best use of current facilities



Decision # 06

Approve the development of a K-12 campus at the current Laughlin middle/senior high school

ES = Elementary School
JHS = Junior High School
MS = Middle School
HS = High School

Las Vegas Academy of the Arts Master Plan

Year Built	Capacity	2021 Enrollment	% of Capacity	Five Year FCI	Ten Year FCI
1930	1,549	1,726	111.43%	0.50	0.72

Las Vegas Academy of the Arts

- Comprehensive master plan was developed in 2018
- Completed in 8 phases over ten years
- Oldest high school in CCSD
- Increase capacity to 2,200 students
- Provide unique spaces needed to facilitate the curriculum



Decision # 07

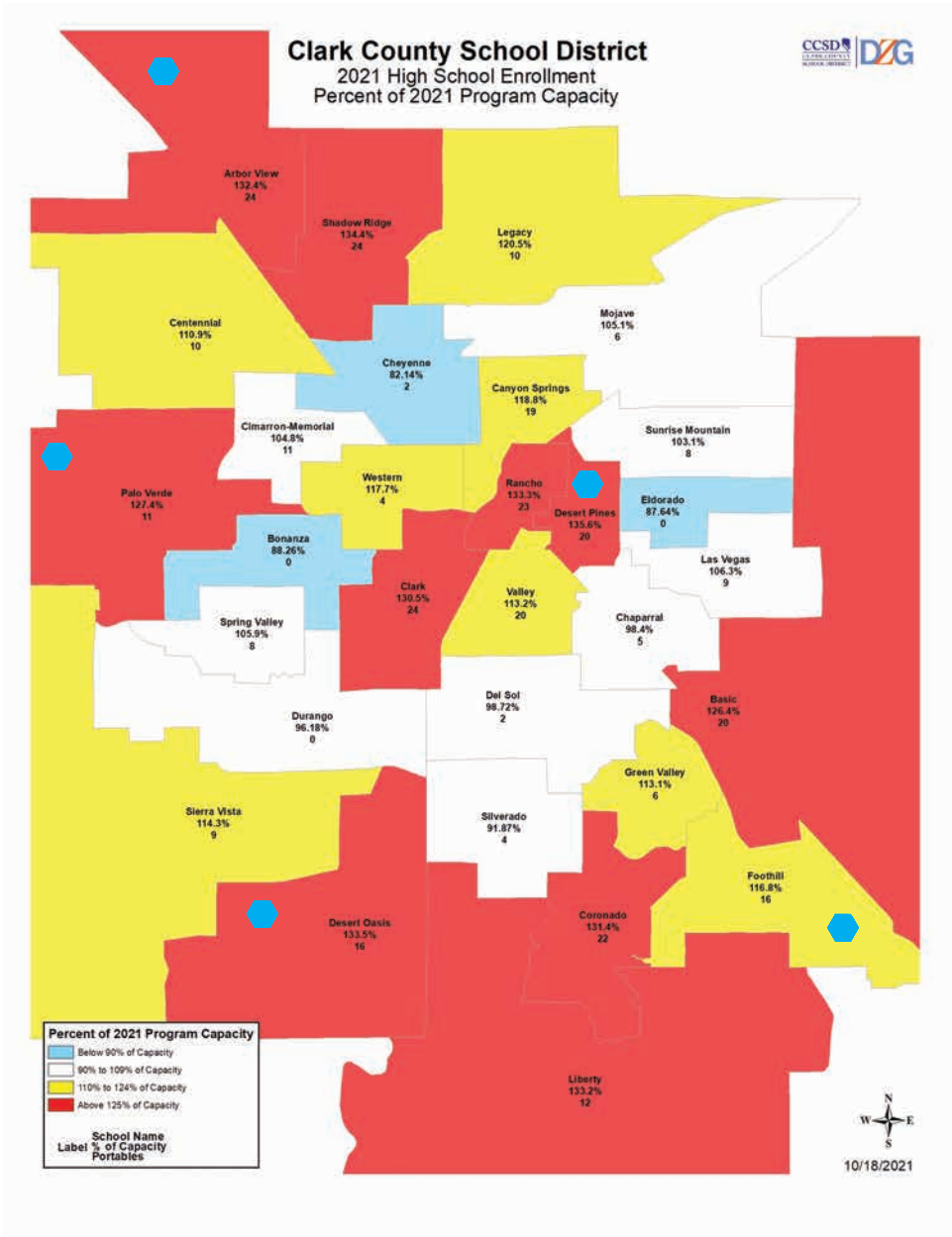
Renovate and replace the Las Vegas Academy of the Arts as outlined in the completed master plan document

ES = Elementary School
JHS = Junior High School
MS = Middle School
HS = High School

Construct Five New High Schools

Over the next 14 years it is anticipated that there will be a need for five high schools to accommodate future growth, two comprehensive high schools and three choice high schools

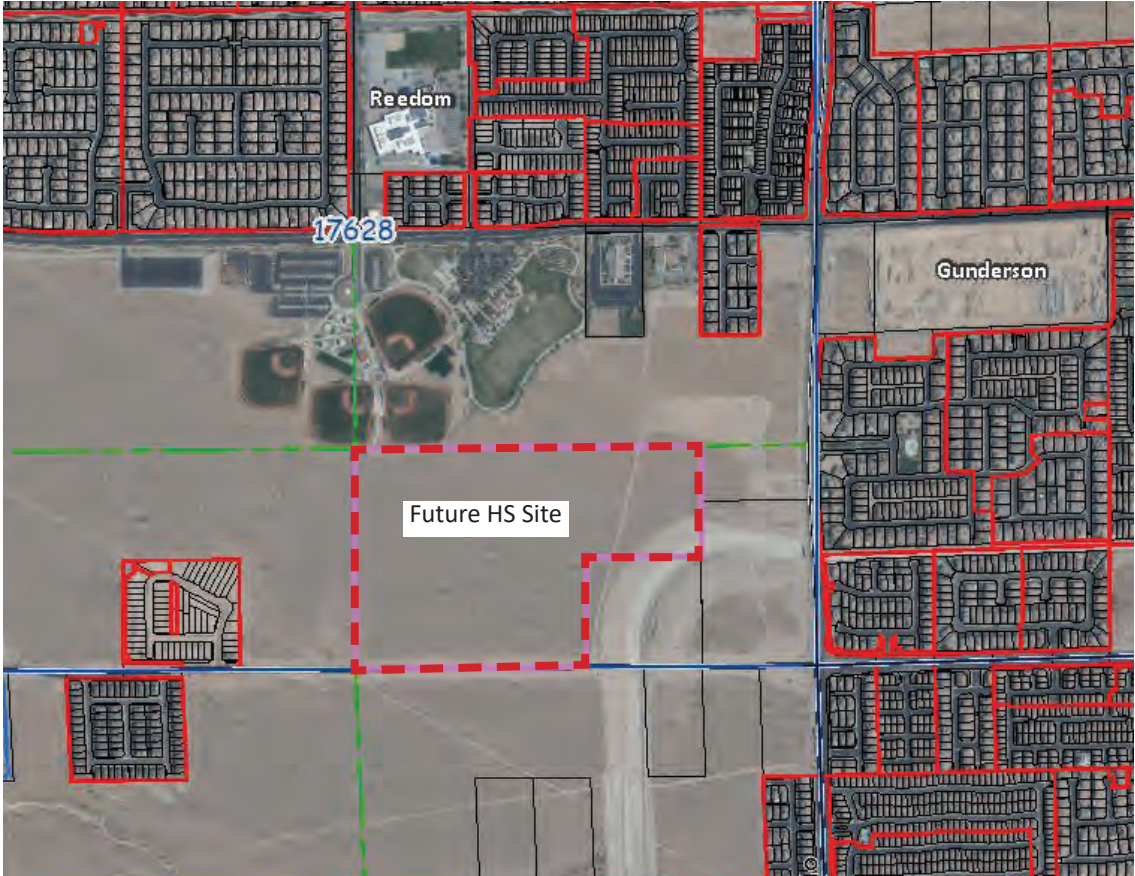
- Comprehensive high school locations
 - Southwest (site previously approved in Revision 3)
 - Northwest (site previously approved in Revision 3)
- Choice high school locations
 - Central (convert Dell Robison MS)
 - West (site to be determined in future revision)
 - Southeast (possible partnership with Nevada System of Higher Education)



New Comprehensive High School in Southwest

- Project was previously approved as part of revision 3 to the 2015 Capital Improvement Plan
- Student capacity of 2,700
- 47+/- acres located near the intersection of Cactus Avenue and South Buffalo Drive
- New high school would provide capacity relief to near by high schools
 - Desert Oasis High School
 - Sierra Vista High School
- Tentative opening August 2027

School	Capacity	Enrolled	% of Capacity	Students Estimated by 2035
Desert Oasis High School	2499	3337	133.35%	759
Sierra Vista High School	2497	2853	114.26%	1021



Decision # 08a

Construct new comprehensive high school in the Southwest

ES = Elementary School
JHS = Junior High School
MS = Middle School
HS = High School

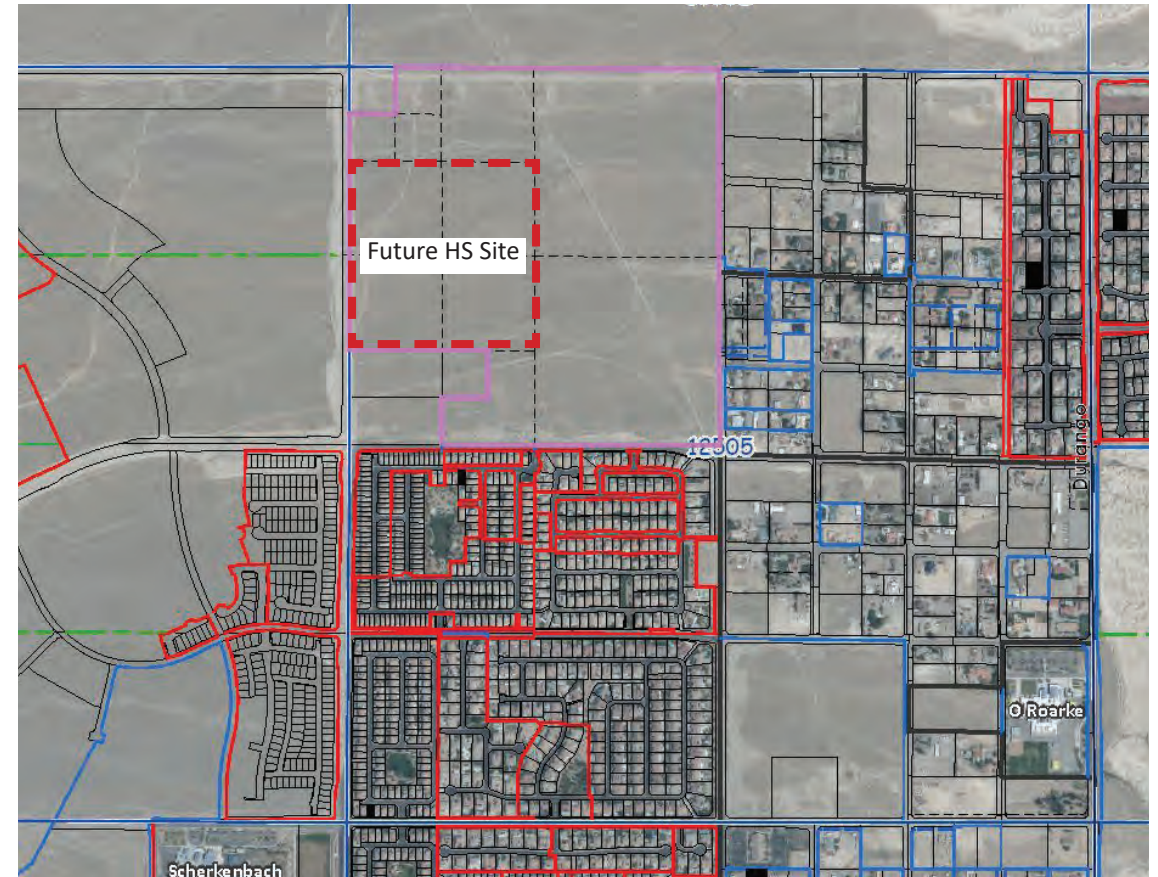
New Comprehensive High School in Northwest

- Project was previously approved as part of revision 3 to the 2015 Capital Improvement Plan
- Student capacity of 2,700
- 40+/- acres located near the intersection of Skye Canyon Park Drive and Log Cabin Way
- New high school would provide capacity relief to near by high schools
 - Arbor View High School
 - Centennial High School
 - Shadow Ridge High School
- Tentative Opening 2028

School	Capacity	Enrolled	% of Capacity	Students Estimated by 2035
Arbor View High School	2484	3289	132.41%	1004
Centennial High School	2514	2787	110.86%	468
Shadow Ridge High School	2467	3315	134.37%	290

Decision # 08b

Construct new comprehensive high school in the Northwest



ES = Elementary School
 JHS = Junior High School
 MS = Middle School
 HS = High School

Dell Robison Middle School

Year Built	Capacity	2021 Enrollment	% of Capacity	Five Year FCI	Ten Year FCI
1973	1,259	883	70.14%	0.43	0.49

Surrounding Middle Schools

School	Capacity	2021 Enrollment	% of Capacity
Duane Keller MS	1,554	1,189	76.51%
Jerome Mack MS	1,569	1,114	71%
Mario and JoAnne Monaco MS	1,554	1,131	72.78%

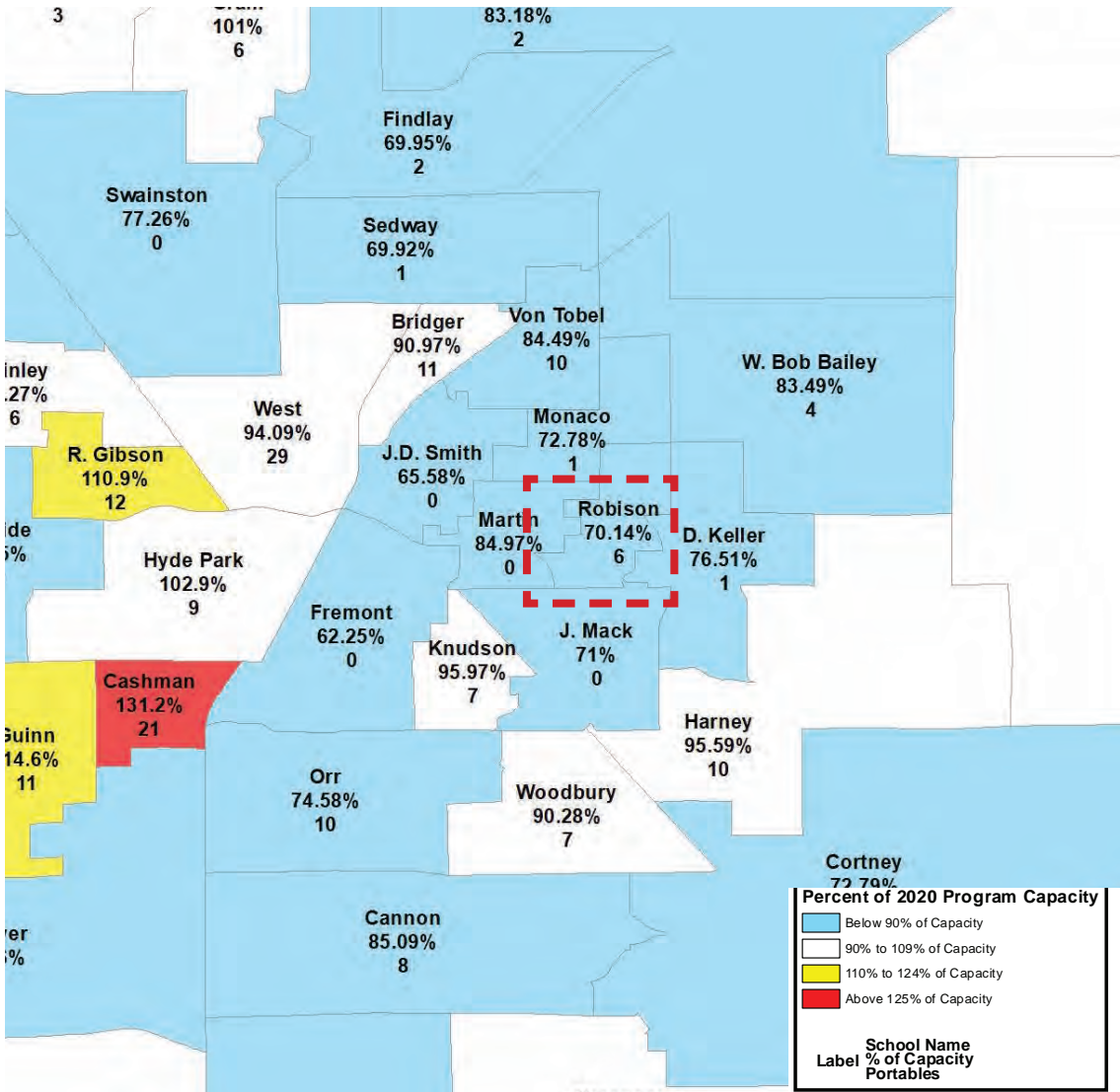
High School Relief

School	Capacity	Enrolled	% of Capacity	Students Estimated by 2035
Rancho High School	2378	3171	133.35%	220
Deser Pines High School	2382	3231	135.64%	62

- Build a choice high school and rezone the students to surrounding schools.
- Tentative opening August 2027

Decision # 08c

Replace Dell Robison Middle School with a 1,000 seat choice high school



ES = Elementary School
JHS = Junior High School
MS = Middle School
HS = High School

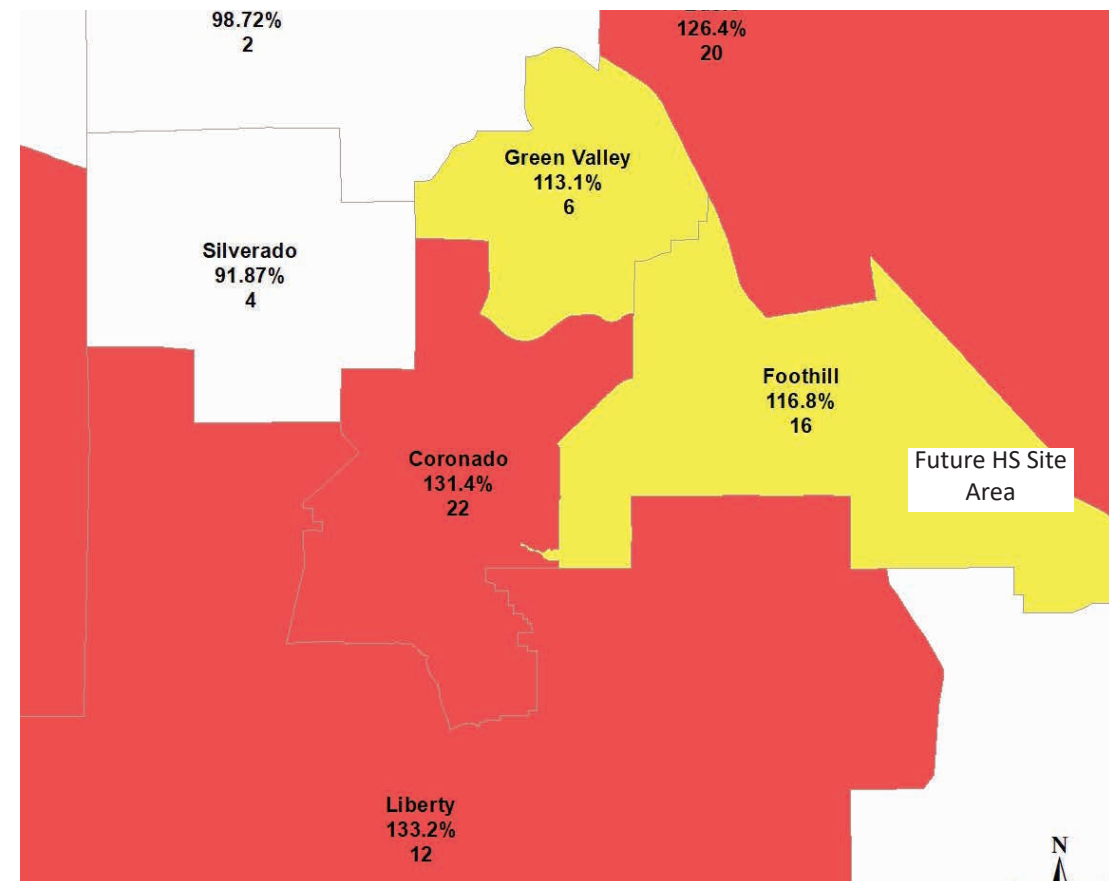
New Choice High School in Southeast

- Explore a partnership with Nevada System of Higher Education (NSHE)
- Student capacity of 1,000
- 20+/- acres to be located in the Southeast part of the valley
- New high school would provide capacity relief to near by high schools
 - Coronado High School
 - Foothill High School
 - Basic High School
- Tentative opening August 2029

School	Capacity	Enrolled	% of Capacity	Students Estimated by 2035
Basic High School	2085	2584	126.39%	1869
Coronado High School	2571	3325	131.44%	62
Foothill High School	2172	2495	116.79%	450

Decision # 08d

Construct new choice high school in the Southeast

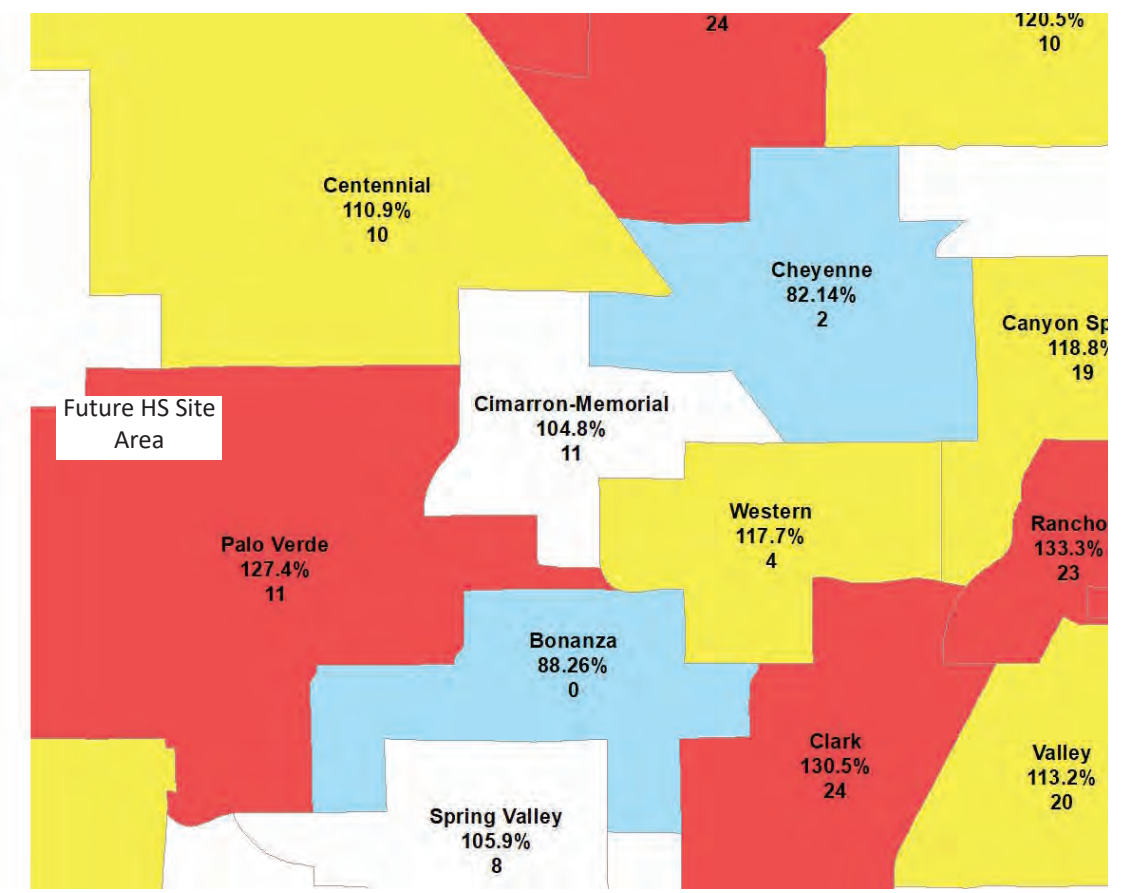


ES = Elementary School
 JHS = Junior High School
 MS = Middle School
 HS = High School

New Choice High School in the West

- Student capacity of 1,000
- 20+/- acres to be located in the west part of the valley
- New high school would provide capacity relief to near by high schools
 - Palo Verde High School
- Tentative opening August 2030

School	Capacity	Enrolled	% of Capacity	Students Estimated by 2035
Palo Verde High School	2546	3243	127.38%	1869



Decision # 08e

Construct new choice high school in the West

ES = Elementary School
JHS = Junior High School
MS = Middle School
HS = High School

Construct 10 New Elementary Schools

10 NEW ELEMENTARY SCHOOLS

Over the next 14 years it is anticipated that there will be a need for 10 new elementary schools to accommodate future growth



- Allocate money for the schools
- New schools will be located based on new housing development needs
- It is anticipated that new schools will not need to be constructed till at least 2026

Decision # 09

Allocate money for ten new elementary schools

ES = Elementary School
JHS = Junior High School
MS = Middle School
HS = High School



CLOSING COMMENTS AND QUESTIONS



BOARD OF SCHOOL TRUSTEES

Linda P. Cavazos, President
Irene A. Cepeda, Vice President
Evelyn Garcia Morales, Clerk
Lola Brooks, Member
Danielle Ford, Member
Lisa Guzmán, Member
Katie Williams, Member

Jesus F. Jara, Ed.D., Superintendent